

# 港鐵 服務快訊

MTR Service Newsletter

2018年第3季

3rd quarter 2018



 MTR 港鐵

心繫生活每一程



## 高速鐵路(香港段)正式投入服務

「廣州—深圳—香港」高速鐵路(香港段)已於九月二十三日正式投入服務，標誌著香港的跨境運輸進入高鐵新時代。全長二十六公里的高速鐵路(香港段)以香港西九龍站為起點，向北伸延至深圳/香港分界，連接超過二萬五千公里的國家高鐵網絡。這項舒適便捷的嶄新服務大大縮減往來香港與內地各大城市的交通時間。

## High Speed Rail (Hong Kong Section) opens for service

A new era in cross-boundary transport was marked with the commencement of passenger service on the Guangzhou - Shenzhen - Hong Kong High Speed Rail (Hong Kong Section) on 23 September. The 26-km High Speed Rail (Hong Kong Section) runs from Hong Kong West Kowloon Station heading north to the Shenzhen / Hong Kong boundary, where it connects to the National High Speed Rail network of over 25,000km in length. This comfortable and convenient new service significantly reduces journey times for travel between Hong Kong and major Mainland cities.



## 香港西九龍站的無縫連接

香港西九龍站以時尚兼具空間現代感的設計，成為香港的新地標。車站採用超過四千塊不同形狀的流線型玻璃，並以混凝土及鋼材構建的巨型支柱支撐。香港西九龍站周邊設有七條行人天橋及兩條行人隧道，將車站與附近發展項目及本地交通網絡緊密連接起來，為乘客帶來更方便的無縫連接。

車站站頂及周邊範圍設有總面積達三公頃的綠化空間，種植大量樹木及灌木，在香港的心臟地帶締造一個可供市民休憩的城市新綠洲。

## Seamless connectivity at Hong Kong West Kowloon Station

With its sleek and spacious modernist design, Hong Kong West Kowloon Station is a new icon for the city. Along with its stunning architecture including over 4,000 pieces of undulating glass panels, supported by concrete and steel mega columns, the Station also has seamless connections for passengers' convenience. Seven footbridges and two pedestrian subways connect to nearby developments and the city's extensive and efficient public transport network.

Atop and around the Station, an attractive three-hectare green area is provided with numerous trees and plants, creating a new urban oasis for leisure and relaxation in the heart of Hong Kong.



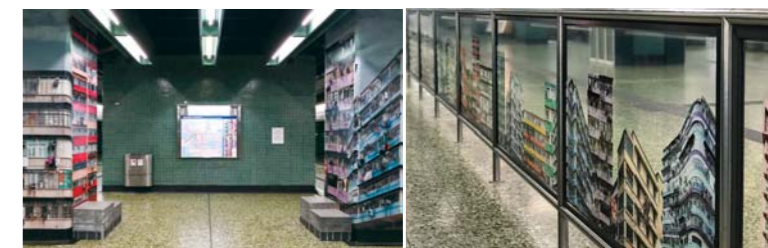
## 全新海報宣揚扶手電梯安全的重要

港鐵公司於七月十八日展開今年的扶手電梯安全運動，並製作了一系列宣傳海報和短片，宣揚不正確使用扶手電梯會引致嚴重後果的訊息。港鐵網絡會展示這些宣傳海報和短片，提醒乘客失平衡、身體不適或攜帶大型物件等扶手電梯意外常見成因。扶手電梯安全大使亦會穿上鮮明的紅色制服，於指定港鐵站提醒乘客使用扶手電梯時「握扶手，企定定」。



## New posters reinforce the importance of escalator safety

On 18 July, MTR rolled out this year's Escalator Safety Campaign with a set of new posters and videos highlighting the serious consequences of unsafe escalator usage. Those posters and videos were displayed across the MTR network to remind passengers of the most common causes of accidents: loss of balance, body discomfort and carriage of bulky items. Escalator Safety Ambassadors dressed in red T-shirts were deployed at designated MTR stations to further remind passengers to "Hold the handrail and stand firm".



## 創新藝術品進駐深水埗站

乘客進出港鐵深水埗站時，會發現站內部分玻璃欄杆、牆身及月台柱身都已大變身，除展示深水埗的社區獨特風貌，亦為車站增添獨特地區特色。這些別樹一格的藝術品中，包括以常見塑料凳子和本地建築物為創作題材的座椅。名為「城市的特性」和「深水埗之椅」的藝術品全是來自薩凡納藝術設計大學(SCAD)的學生，透過SCAD x MTR「港鐵深水埗站藝術項目」將他們的創意設計活現在市民眼前。

## Attractive new artworks at Sham Shui Po Station

Passengers to MTR Sham Shui Po Station will find parts of the glass balustrades, station walls and platform columns have been adorned with images of Sham Shui Po's iconic architecture to fill the station with the distinctive flavour of the local neighbourhood. The impressive artworks also include additional seats creatively made in the form of common plastic stools and local buildings. Titled "Urban Identity" and "Chairs of Sham Shui Po", the artworks were made by students from the Savannah College of Art and Design (SCAD) who brought their creative ideas to life through the "SCAD x MTR Art in MTR Sham Shui Po Station Project".

**2018年顧客服務表現**(7月至9月)

**2018 Customer Service Performance (July - September)**

服務表現項目 Service Performance Item		目標及表現 Target and performance					
	<span><span><span></span></span></span> 觀塘綫、荃灣綫、港島綫、將軍澳綫、南港島綫、東涌綫及迪士尼綫 <span>Kwun Tong Line, Tsuen Wan Line, Island Line,Tseung Kwan O Line, South Island Line, Tung Chung Line &amp; Disneyland Resort Line</span>	<span><span><span></span></span></span> 機場快綫 <span>Airport Express</span>	<span><span><span></span></span></span> 東鐵綫(包括馬鞍山綫) <span>East Rail Line (Including Ma On Shan Line)</span>	<span><span><span></span></span></span> 西鐵綫 <span>West Rail Line</span>	<span><span><span></span></span></span> 輕鐵 <span>Light Rail</span>	<span><span><span></span></span></span> 目標 <span>Target</span>	<span><span><span></span></span></span> 表現優於目標 (7月至9月) <span>Performance better than target (July - September)</span>
<span><span><span></span></span></span> 列車按照編定班次行走 (列車服務供應) <span>Train Service Delivery</span>	<span><span><span></span></span></span> <b>99.5%</b>	<span><span><span></span></span></span> <b>99.8%</b>	<span><span><span></span></span></span> <b>99.5%</b>	<span><span><span></span></span></span> <b>99.9%</b>	<span><span><span></span></span></span> <b>99.5%</b>	<span><span><span></span></span></span> <b>99.9%</b>	
<span><span><span></span></span></span> 乘客車程準時程度 <span>Passenger Journeys on Time</span>	<span><span><span></span></span></span> <b>99.5%</b>	<span><span><span></span></span></span> <b>99.9%</b>	<span><span><span></span></span></span> <b>99%</b>	<span><span><span></span></span></span> <b>99.9%</b>	<span><span><span></span></span></span> <b>99%</b>	<span><span><span></span></span></span> <b>99.9%</b>	
<span><span><span></span></span></span> 列車服務準時程度 <span>Train Punctuality</span>	<span><span><span></span></span></span> <b>99%</b>	<span><span><span></span></span></span> <b>99.8%</b>	<span><span><span></span></span></span> <b>99%</b>	<span><span><span></span></span></span> <b>99.9%</b>	<span><span><span></span></span></span> <b>99%</b>	<span><span><span></span></span></span> <b>99.9%</b>	
<span><span><span></span></span></span> 列車服務可靠程度 (列車行走多少車卡公里才遇到一次五分鐘或以上的延誤) <span>Train Reliability (Train Car-km per train failure causing delays ≥ 5 mins)</span>	<span><span><span></span></span></span> <b>650,000公里 (km)</b>	<span><span><span></span></span></span> <b>2,621,794公里 (km)</b>	<span><span><span></span></span></span> <b>650,000公里 (km)</b>	<span><span><span></span></span></span> <b>4,632,927公里 (km)</b>	<span><span><span></span></span></span> —	<span><span><span></span></span></span> —	
<span><span><span></span></span></span> 車票可靠程度 (乘客使用智能車票多少次才遇到一次車票失誤) <span>Ticket Reliability (Smart ticket transactions per ticket failure)</span>	<span><span><span></span></span></span> <b>10,500次 (transactions)</b>	<span><span><span></span></span></span> <b>55,828次 (transactions)</b>	<span><span><span></span></span></span> <b>10,500次 (transactions)</b>	<span><span><span></span></span></span> <b>55,828次 (transactions)</b>	<span><span><span></span></span></span> —	<span><span><span></span></span></span> —	
<span><span><span></span></span></span> 增值機可靠程度 <span>Add Value Machine Reliability</span>	<span><span><span></span></span></span> <b>99%</b>	<span><span><span></span></span></span> <b>99.8%</b>	<span><span><span></span></span></span> <b>99%</b>	<span><span><span></span></span></span> <b>99.8%</b>	<span><span><span></span></span></span> <b>99%</b>	<span><span><span></span></span></span> <b>99.8%</b>	
<span><span><span></span></span></span> 自動售票機可靠程度 <span>Ticket Machine Reliability</span>	<span><span><span></span></span></span> <b>99%</b>	<span><span><span></span></span></span> <b>99.7%</b>	<span><span><span></span></span></span> <b>99%</b>	<span><span><span></span></span></span> <b>99.8%</b>	<span><span><span></span></span></span> <b>99%</b>	<span><span><span></span></span></span> <b>99.9%</b>	
<span><span><span></span></span></span> 出入閘機可靠程度 <span>Ticket Gate Reliability</span>	<span><span><span></span></span></span> <b>99%</b>	<span><span><span></span></span></span> <b>99.9%</b>	<span><span><span></span></span></span> <b>99%</b>	<span><span><span></span></span></span> <b>99.9%</b>	<span><span><span></span></span></span> —	<span><span><span></span></span></span> —	
<span><span><span></span></span></span> 輕鐵月台八達通收費器可靠程度 <span>Light Rail Platform Octopus Processor Reliability</span>	<span><span><span></span></span></span> —	<span><span><span></span></span></span> —	<span><span><span></span></span></span> —	<span><span><span></span></span></span> —	<span><span><span></span></span></span> <b>99%</b>	<span><span><span></span></span></span> <b>99.9%</b>	
<span><span><span></span></span></span> 扶手電梯可靠程度 <span>Escalator Reliability</span>	<span><span><span></span></span></span> <b>99%</b>	<span><span><span></span></span></span> <b>99.9%</b>	<span><span><span></span></span></span> <b>99%</b>	<span><span><span></span></span></span> <b>99.9%</b>	<span><span><span></span></span></span> <b>99%</b>	<span><span><span></span></span></span> <b>99.8%</b>	
<span><span><span></span></span></span> 乘客升降機可靠程度 <span>Passenger Lift Reliability</span>	<span><span><span></span></span></span> <b>99.5%</b>	<span><span><span></span></span></span> <b>99.8%</b>	<span><span><span></span></span></span> <b>99.5%</b>	<span><span><span></span></span></span> <b>99.9%</b>	<span><span><span></span></span></span> <b>99.5%</b>	<span><span><span></span></span></span> <b>99.8%</b>	
<span><span><span></span></span></span> 溫度及通風 <span>Temperature and Ventilation Levels</span>	<span><span><span></span></span></span> <b>97.5%</b>	<span><span><span></span></span></span> <b>99.9%</b>	<span><span><span></span></span></span> <b>99.9%</b>	<span><span><span></span></span></span> <b>99.9%</b>	<span><span><span></span></span></span> <b>99.9%</b>	<span><span><span></span></span></span> <b>99.9%</b>	
<div> <div><span><span><span></span></span></span> 列車<span> </span>: 維持一個涼快、舒適的車廂環境，平均溫度在攝氏26度或以下</div> <div><span><span><span></span></span></span> <b>Trains<span> </span>: To maintain a cool, pleasant and comfortable train environment generally at or below 26<span> </span>°C</b></div> <div><span><span><span></span></span></span> 車廂空調系統每月發生故障次數</div> <div><span><span><span></span></span></span> <b>On-train air-conditioning failures per month</b></div> <div><span><span><span></span></span></span> 車站<span> </span>: 維持一個涼快、舒適的車站環境，月台平均溫度在攝氏27度或以下，車站大堂則在攝氏29度或以下（特別炎熱的日子除外）</div> <div><span><span><span></span></span></span> <b>Stations<span> </span>: To maintain a cool, pleasant and comfortable environment generally at or below 27<span> </span>°C for platforms and 29<span> </span>°C for station concourses (except on very hot days)</b></div> </div>	<span><span><span></span></span></span> <b>93%</b>	<span><span><span></span></span></span> <b>99%</b>	<span><span><span></span></span></span> <b>99.7%</b>	<span><span><span></span></span></span> <b>99.7%</b>	<span><span><span></span></span></span> <b>99.7%</b>	<span><span><span></span></span></span> <b>99.7%</b>	
<span><span><span></span></span></span> 清潔程度 <span>Railway Cleanliness</span>	<span><span><span></span></span></span> <b>99%</b>	<span><span><span></span></span></span> <b>99%</b>	<span><span><span></span></span></span> <b>99%</b>	<span><span><span></span></span></span> <b>99%</b>	<span><span><span></span></span></span> <b>99%</b>	<span><span><span></span></span></span> <b>100%</b>	
<div> <div><span><span><span></span></span></span> 列車車廂<span> </span>: 每天清潔</div> <div><span><span><span></span></span></span> <b>Train Compartment<span> </span>: Cleaned daily</b></div> <div><span><span><span></span></span></span> 列車車身<span> </span>: 平均每兩天清洗一次</div> <div><span><span><span></span></span></span> <b>Train Exterior<span> </span>: Washed every 2 days (on average)</b></div> </div>	<span><span><span></span></span></span> <b>99%</b>	<span><span><span></span></span></span> <b>99%</b>	<span><span><span></span></span></span> <b>99%</b>	<span><span><span></span></span></span> <b>99%</b>	<span><span><span></span></span></span> <b>99%</b>	<span><span><span></span></span></span> <b>100%</b>	
<span><span><span></span></span></span> 西北鐵路服務範圍內之巴士服務 <span>Northwest Transit Service Area Bus Service</span>	<span><span><span></span></span></span> <b>99%</b>	<span><span><span></span></span></span> <b>99%</b>	<span><span><span></span></span></span> <b>99%</b>	<span><span><span></span></span></span> <b>99.3%</b>	<span><span><span></span></span></span> <b>99%</b>	<span><span><span></span></span></span> <b>99.3%</b>	
<div> <div><span><span><span></span></span></span> 按照編定班次行走 <span>Service Delivery</span></div> <div><span><span><span></span></span></span> 車身清潔<span> </span>: 每天清洗 <span>Cleanliness<span> </span>: Washed daily</span></div> </div>	<span><span><span></span></span></span> <b>99%</b>	<span><span><span></span></span></span> <b>99%</b>	<span><span><span></span></span></span> <b>99%</b>	<span><span><span></span></span></span> <b>99%</b>	<span><span><span></span></span></span> <b>99%</b>	<span><span><span></span></span></span> <b>100%</b>	
<span><span><span></span></span></span> 六個工作天內回覆乘客查詢 <span>Passenger Enquiry Response Time within 6 Working Days</span>	<span><span><span></span></span></span> <b>99%</b>	<span><span><span></span></span></span> <b>99%</b>	<span><span><span></span></span></span> <b>99%</b>	<span><span><span></span></span></span> <b>99%</b>	<span><span><span></span></span></span> <b>99%</b>	<span><span><span></span></span></span> <b>100%</b>	

載客量 (第3季) Total passengers carried (3rd quarter) : 508,514,000

服務表現 (第3季) Service performance (3rd quarter)  
20分鐘或以上的延誤 Delays of 20 minutes or more : 15

2018服務表現安排 (累積至第3季) Service Performance Arrangement (up to 3rd quarter)

港鐵 (重鐵及輕鐵) 31分鐘或以上的服務延誤並已確認成因是在港鐵控制範圍內：7宗撥出作2019年年中開始的八達通「每程3%車費扣減」優惠的金額總數：一千萬元

No. of service disruptions of 31 minutes or more (heavy rail and light rail) confirmed to be due to factors within MTR control: 7
Amount put aside for "3% Rebate for Each Octopus Trip" promotion from mid 2019: \$10Million

目標 Target

表現優於目標 (7月至9月) Performance better than target (July - September)

## 列車平均班次 Average Train Frequency

平日、星期日及公眾假期 (以分鐘計算) Weekdays, Sundays and Public Holidays (based on minutes)

	平日早上繁忙時段 <span>Weekdays Morning Peak Hours</span>	平日晚上繁忙時段 <span>Weekdays Evening Peak Hours</span>	平日非繁忙時段/星期日及公眾假期* <span>Weekdays Non-peak Hours* Sundays and Public Holidays*</span>
<b>港島綫</b> <span>Island Line</span>	1.9	2.1	3.1–6
<b>荃灣綫</b> <span>Tsuen Wan Line</span>	2	2	2.5–5.5
<b>觀塘綫</b> <span>Kwun Tong Line</span>			
調景嶺 - 何文田 <span>Tiu Keng Leng – Ho Man Tin</span>	2.1	2.3	2.8–5
何文田 - 黃埔 <span>Ho Man Tin – Whampoa</span>	4.2	4.6	3.6–6.2
<b>將軍澳綫</b> <span>Tseung Kwan O Line</span>			
北角 - 將軍澳 <span>North Point – Tseung Kwan O</span>	2.2	2.2	4–5.8
北角 - 寶琳 <span>North Point – Po Lam</span>	2.5 / 4	2.5 / 4	4–6
北角 - 康城 <span>North Point – LOHAS Park</span>	6.7	6.7	-
調景嶺 - 康城 <span>Tiu Keng Leng – LOHAS Park</span>	-	-	10.5–13.8
<b>南港島綫</b> <span>South Island Line</span>	3.3	3.3	4.5–6
<b>東涌綫</b> <span>Tung Chung Line</span>			
香港 - 青衣 <span>Hong Kong – Tsing Yi</span>	3.6	4	6–12
香港 - 東涌 <span>Hong Kong – Tung Chung</span>	6–8	4–8	6–12
<b>迪士尼綫</b> <span>Disneyland Resort Line</span>	4.5–5	4.5–5	10 <sup>‡</sup>
<b>東鐵綫</b> <span>East Rail Line</span>			
紅磡 - 上水 <span>Hung Hom – Sheung Shui</span>	2.6–8	4–8	3.5–8
紅磡 - 羅湖 <span>Hung Hom – Lo Wu</span>	6–8	6–8	5.5–8
紅磡 - 落馬洲 <span>Hung Hom – Lok Ma Chau</span>	10–12	10–12	10–14
<b>馬鞍山綫</b> <span>Ma On Shan Line</span>	3	4	5–8
<b>西鐵綫</b> <span>West Rail Line</span>	2.9	3.5	5–7
<b>機場快綫</b> <span>Airport Express</span>	10	10	10–12
<b>輕鐵</b> <span>Light Rail</span>			
路綫 / <span>Route 505</span>	6–9	5–9	7–14
路綫 / <span>Route 507</span>	5–9	6–9	7–15
路綫 / <span>Route 610</span>	5–9	5–10	8–17
路綫 / <span>Route 614</span>	10–17	10–16	11–23
路綫 / <span>Route 614P</span>	9–12	8–12	10–20
路綫 / <span>Route 615</span>	10–18	10–18	11–23
路綫 / <span>Route 615P</span>	9–12	8–12	10–20
路綫 / <span>Route 705</span>	5–6	5–7	6–11
路綫 / <span>Route 706</span>	4–7	5–7	6–13
路綫 / <span>Route 751</span>	4–9	5–9	7–16
路綫 / <span>Route 751P</span>	7–15	5–12	-
路綫 / <span>Route 761P</span>	3–7	4–6	5–14

<sup>\*</sup> 於晨早及午夜時段，港島綫、荃灣綫、觀塘綫、將軍澳綫、南港島綫、東鐵綫及西鐵綫班次將減至每12分鐘一班，而部分輕鐵路綫班次將減至每23分鐘一班。

<sup>\*</sup> In the early morning and late night, train frequency of the Island Line, Tsuen Wan Line, Kwun Tong Line, Tseung Kwan O Line, South Island Line, East Rail Line and West Rail Line will be reduced to every 12 minutes, whereas train frequency of some routes of Light Rail will be reduced to every 23 minutes.

<sup>‡</sup> 星期日及公眾假期，迪士尼綫於香港迪士尼樂園早上開放及晚上關閉時的班次為4.5至5分鐘一班。

<sup>‡</sup> On Sundays and public holidays, Disneyland Resort Line trains are operated at 4.5 to 5 minute frequencies when Hong Kong Disneyland Resort opens in the morning and closes in the evening.

## 列車服務時間 Hours of Daily Operation

港島綫、荃灣綫、觀塘綫、將軍澳綫、南港島綫、東涌綫、迪士尼綫、西鐵綫、機場快綫及輕鐵 Island Line, Tsuen Wan Line, Kwun Tong Line,Tseung Kwan O Line, South Island Line, Tung Chung Line, Disneyland Resort Line, West Rail Line, Airport Express and Light Rail : 19小時/ hours

東鐵綫及馬鞍山綫 East Rail Line and Ma On Shan Line : 19.5小時/ hours

## 列車平均班次 Average Train Frequency

星期六 (以分鐘計算) Saturdays (based on minutes)

	早上繁忙時段 <span>Morning Peak Hours</span>	晚上繁忙時段 <span>Evening Peak Hours</span>	非繁忙時段* <span>Non-peak Hours*</span>
<b>港島綫</b> <span>Island Line</span>	3	2.4	4–5
<b>荃灣綫</b> <span>Tsuen Wan Line</span>	2.5	2.2	4–5.5
<b>觀塘綫</b> <span>Kwun Tong Line</span>			
調景嶺 - 何文田 <span>Tiu Keng Leng – Ho Man Tin</span>	2.5	2.3	3.5–5.3
何文田 - 黃埔 <span>Ho Man Tin – Whampoa</span>	5	4.6	
<b>將軍澳綫</b> <span>Tseung Kwan O Line</span>			
北角 - 將軍澳 <span>North Point – Tseung Kwan O</span>	2.2	-	4–5.6
北角 - 寶琳 <span>North Point – Po Lam</span>	2.5 / 4	-	4–6
北角 - 康城 <span>North Point – LOHAS Park</span>	6.7	-	-
調景嶺 - 康城 <span>Tiu Keng Leng – LOHAS Park</span>	-	-	10.7–13.8
<b>南港島綫</b> <span>South Island Line</span>	4.5	4	4.5–5
<b>東涌綫</b> <span>Tung Chung Line</span>			
香港 - 青衣 <span>Hong Kong – Tsing Yi</span>	5	-	6.5–12
香港 - 東涌 <span>Hong Kong – Tung Chung</span>	10	-	6.5–12
<b>迪士尼綫</b> <span>Disneyland Resort Line</span>	4.5–5	4.5–5	10
<b>東鐵綫</b> <span>East Rail Line</span>			
紅磡 - 上水 <span>Hung Hom – Sheung Shui</span>	2.6–8	4–8	4–8
紅磡 - 羅湖 <span>Hung Hom – Lo Wu</span>	6–8	6–8	6–8
紅磡 - 落馬洲 <span>Hung Hom – Lok Ma Chau</span>	10–12	10–12	12–14
<b>馬鞍山綫</b> <span>Ma On Shan Line</span>	3	4	4.5–7
<b>西鐵綫</b> <span>West Rail Line</span>	3.5	4	5–7
<b>機場快綫</b> <span>Airport Express</span>	10	10	10–12
<b>輕鐵</b> <span>Light Rail</span>			
路綫 / <span>Route 505</span>	6–9	5–9	8–14
路綫 / <span>Route 507</span>	6–9	6–9	7–15
路綫 / <span>Route 610</span>	6–12	7–10	8–17
路綫 / <span>Route 614</span>	11–15	11–16	12–23
路綫 / <span>Route 614P</span>	9–14	8–13	9–16
路綫 / <span>Route 615</span>	11–15	12–15	14–23
路綫 / <span>Route 615P</span>	9–14	8–13	10–16
路綫 / <span>Route 705</span>	4–6	5–6	5–11
路綫 / <span>Route 706</span>	5–6	4–7	6–10
路綫 / <span>Route 751</span>	5–9	8–11	8–16
路綫 / <span>Route 751P</span>	-	-	-
路綫 / <span>Route 761P</span>	4–6	5–8	6–14

<sup>\*</sup> 於晨早及午夜時段，港島綫、荃灣綫、觀塘綫、將軍澳綫、南港島綫、東鐵綫及西鐵綫班次將減至每12分鐘一班，而部分輕鐵路綫班次將減至每23分鐘一班。

<sup>\*</sup> In the early morning and late night, train frequency of the Island Line, Tsuen Wan Line, Kwun Tong Line, Tseung Kwan O Line, South Island Line, East Rail Line and West Rail Line will be reduced to every 12 minutes, whereas train frequency of some routes of Light Rail will be reduced to every 23 minutes.

## 列車服務時間 Hours of Daily Operation

港島綫、荃灣綫、觀塘綫、將軍澳綫、南港島綫、東涌綫、迪士尼綫、西鐵綫、機場快綫及輕鐵 Island Line, Tsuen Wan Line, Kwun Tong Line,Tseung Kwan O Line, South Island Line, Tung Chung Line, Disneyland Resort Line, West Rail Line, Airport Express and Light Rail : 19小時/ hours

東鐵綫及馬鞍山綫 East Rail Line and Ma On Shan Line : 19.5小時/ hours

**MTR Corporation Limited**  
**香港鐵路有限公司**