

# 東鐵綫過海段新軌道接駁工程 紅磡至旺角東站 列車服務 於指定周日暫停

港鐵乘車小貼士

## 過海路綫新選擇

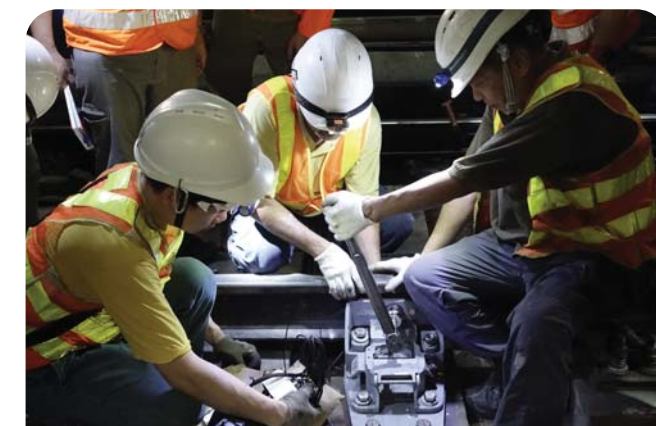
東鐵綫將會延伸過海至金鐘，屆時由紅磡往金鐘的車程會由現時的18分鐘減至約5分鐘，中途毋須轉車就可以直達港島，為你帶來多一個過海路綫選擇，來往港九新界就更直接及快捷方便！



為配合東鐵綫過海至金鐘，我們會在紅磡至旺角東站之間的路段進行新的軌道接駁工程，部分關鍵工序因其複雜性必需較長時間才能完成，故個別路段的列車服務亦需作出調整。

我們會於**2021年1月至10月期間\***，在服務需求較低的星期日，暫停來往紅磡至旺角東站的列車服務，以便將現有軌道與新建路段連接。於工程當日，**東鐵綫會以旺角東為終點站，而西鐵綫則維持正常服務。**

\* 有關日期將視乎工程進度再作公布



每次工程於翌日清晨完成後，東鐵綫會由頭班車起恢復全綫行車。

工程暫時為大家帶來不便，但將來東鐵綫延伸過海後，搭車就更方便！感謝你們的忍耐及諒解。

## 乘客資訊

為方便你可預早計劃行程，於工程前，我們會在紅磡、旺角東、九龍塘、旺角、美孚、尖東以及南昌站等，張貼大型告示提示乘客；於服務暫停當日，亦會在相關車站加強廣播及加派職員，向乘客提供乘車資訊，協助你們繼續行程。此外，我們亦會在相關車站派發單張，介紹乘客可選乘的港鐵其他綫路、以及港鐵免費接駁巴士等安排。

**紅磡至旺角東站列車服務暫停**  
No train service between Hung Hom and Mong Kok East stations

**1月10日 (星期日)**  
10/1/2021 (Sunday)

其他乘車資料 Alternative transport information

**港鐵其他綫路**  
Other MTR lines

**港鐵免費接駁巴士服務\***  
Free MTR shuttle bus service

\* 有關日期將視乎工程進度再作公布

## 預早計劃行程

如選乘港鐵其他綫路，有關車程會可能較原本的長20至30分鐘<sup>#</sup>，而由於接駁巴士服務受路面交通情況及運載能力的限制，整體車程的預計時間將會更長。

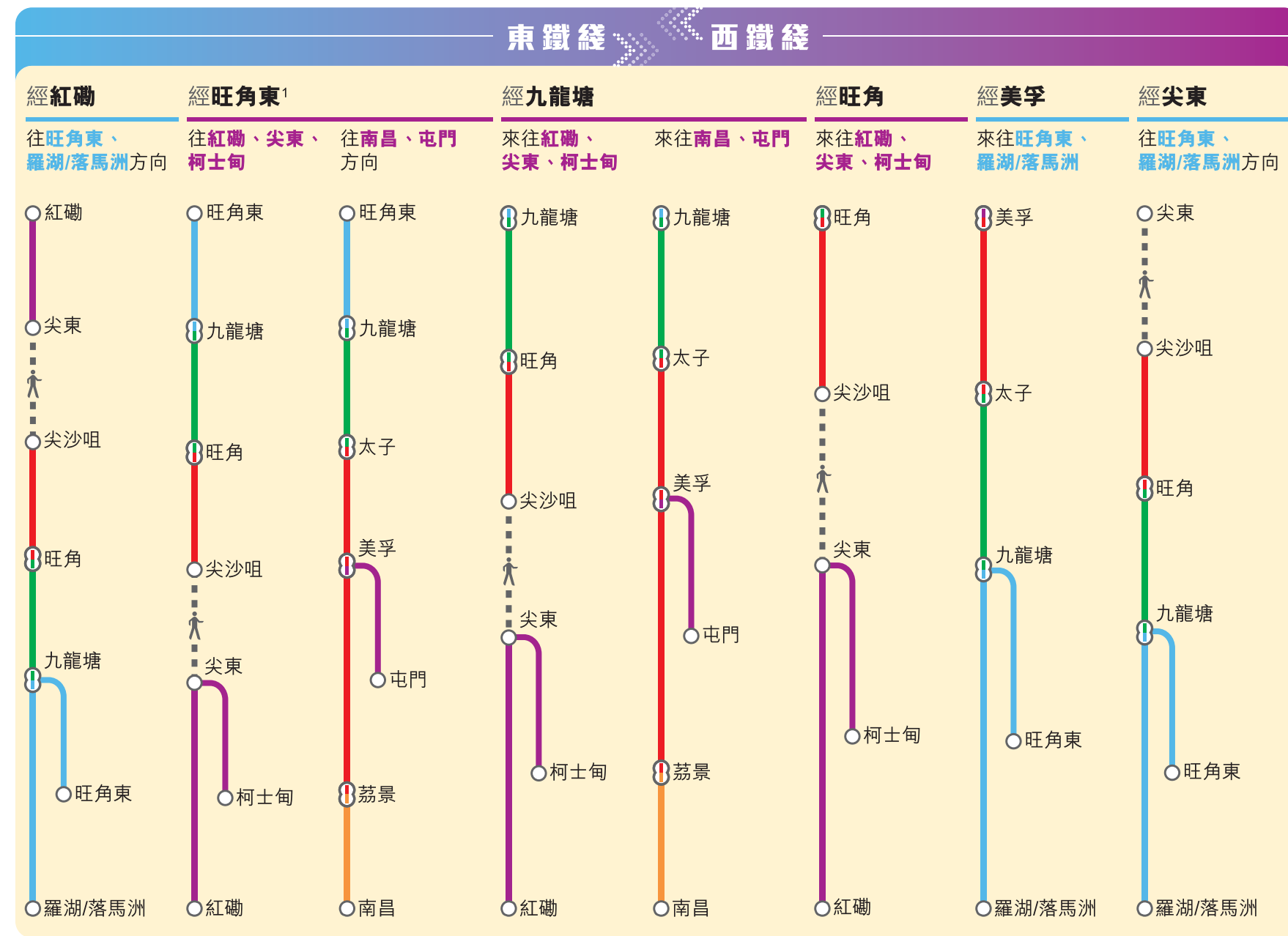
<sup>#</sup> 如計劃乘搭各綫的尾班車，請視乎行程及需要採取的替代路綫，考慮預早約1小時出發

## 港鐵其他綫路

我們鼓勵大家使用港鐵其他綫路，你可於當日出發前使用MTR Mobile內的「行程指南」，輸入出發站及目的地車站尋找。



MTR Mobile 行程指南



<sup>1</sup> 你可由此站步行往太子或旺角附近地區

<sup>2</sup> 如非使用八達通經尖沙咀及尖東站轉乘另一條港鐵綫，須購買兩張單程車票，兩程的合計車費可能會較使用一張單程票於其他轉綫站(如九龍塘、美孚或南昌站)轉綫往同一目的地為高

## 其他公共交通工具

你亦可考慮轉乘其他公共交通工具，請參閱張貼於紅磡及九龍塘站大堂內有關其他公共交通工具的資料。

## 港鐵免費接駁巴士服務

於工程當日，我們會提供免費接駁巴士來往紅磡及九龍塘站(沿途不停站)<sup>^</sup>，請留意站內引領你到上車處的指示牌。受路面交通情況影響，候車時間可能會較長。

**九龍塘站**  
上落車處

EXIT D

服務時間  
**05:45 - 01:14**

**紅磡站**  
上落車處

EXIT C2

服務時間  
**05:30 - 00:35**

<sup>^</sup> 上車前用八達通拍一拍讀寫器，即日於紅磡/九龍塘站入站，該港鐵車程可獲免費(不包括機場快綫及東鐵綫頭等額外費)



有關條款及細則

# MTR travel tips for the Bifurcation Works on the East Rail Line

## Service suspension between Hung Hom and Mong Kok East on selected Sundays



### A new cross harbour line

The East Rail Line Extension will soon extend to Admiralty providing you with a direct, fast and convenient route across the harbour. And as you will no longer have to interchange, your travelling time between Hung Hom and Admiralty will be reduced from 18 to 5 minutes!



In preparation for extending the East Rail Line across the harbour, bifurcation work will be carried out between Hung Hom and Mong Kok East. However, given the complexity of the different phases, some critical work may take longer. Train service on this section will be adjusted accordingly.

To facilitate this work, train service on the East Rail Line will be suspended between Hung Hom and Mong Kok East on selected Sundays **between January and October 2021\*** as there is relatively lower demand. On these Sundays, **East Rail Line trains will stop service at Mong Kok East, while normal service will be maintained on the West Rail Line.**

\* Dates will be announced based on work schedules



East Rail Line trains will resume normal operations, in the early morning of the next day, starting from the first train.

This temporary inconvenience will bring you future convenience! Thank you for your patience and understanding.

### Passenger Information

Giant notices will be displayed at Hung Hom, Mong Kok East, Kowloon Tong, Mong Kok, Mei Foo, East Tsim Sha Tsui and Nam Cheong stations prior to the track work to remind you of the service suspension. On service suspension day(s), Public Announcements will be made and additional staff will be deployed to assist you and provide information on how to continue your journey. In addition, we will distribute leaflets at the relevant stations, suggesting other MTR lines that you can take as well as giving the arrangements for the free MTR shuttle bus service to help you plan your journey.



### Plan your journey

A longer travelling time of 20 to 30 minutes<sup>#</sup> is expected if you are choosing to use other MTR lines. Considering the unpredictable road traffic conditions and the reduced capacity of shuttle buses, passengers' journey time is expected to be much longer.

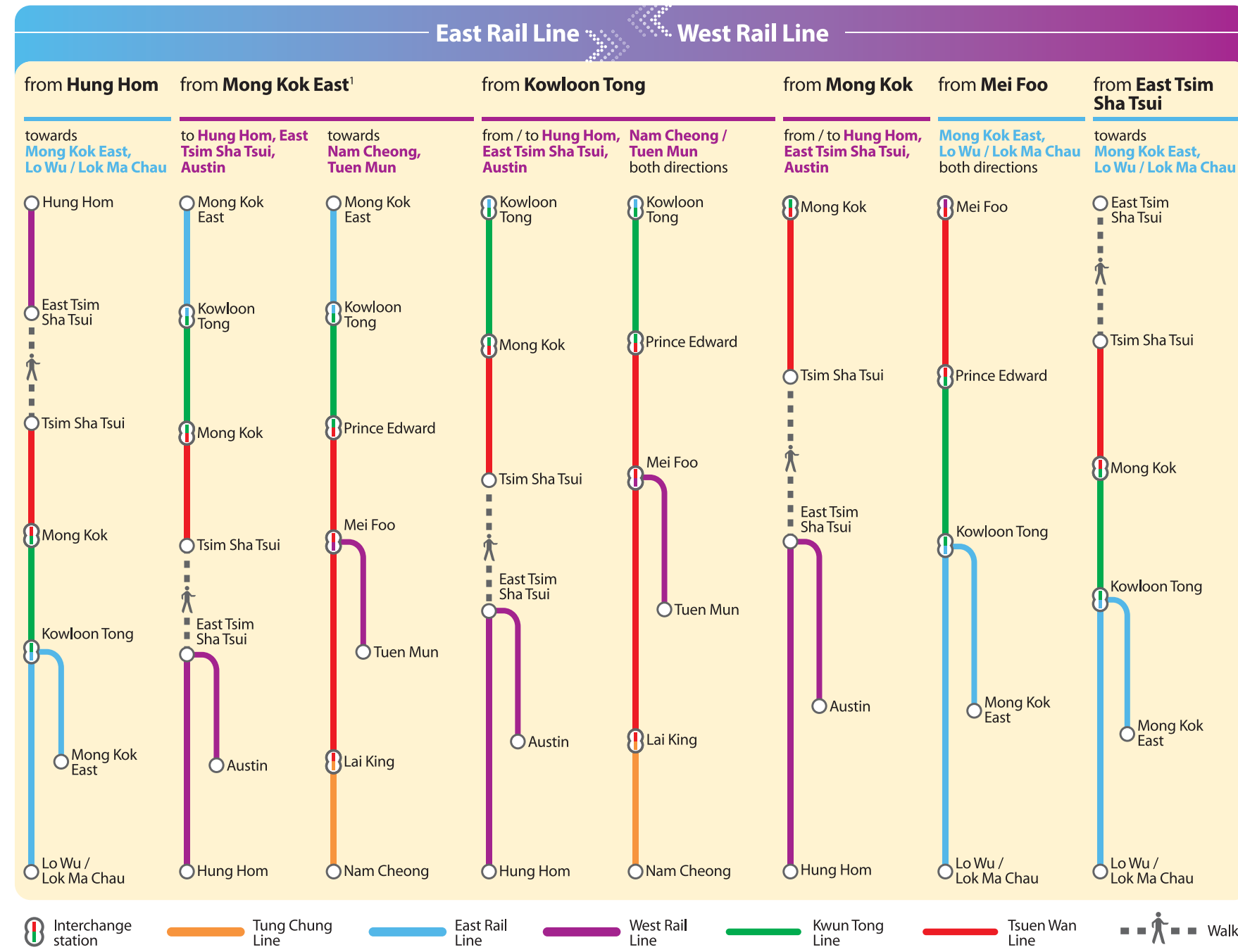
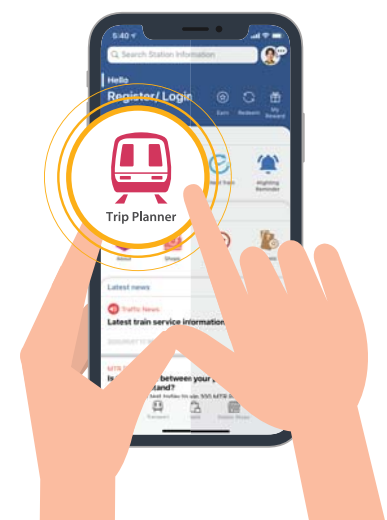
<sup>#</sup> If you intend to take the last train of any Line using an alternative route, please allow an extra hour travelling time

### Other MTR Lines

You are encouraged to use an alternative MTR route. Just input the "from / to" stations in the Trip Planner function of the MTR Mobile to search for possible routes on the day of your journey.



MTR Mobile Trip Planner



<sup>1</sup> You can walk to the Prince Edward or Mong Kok area from this station

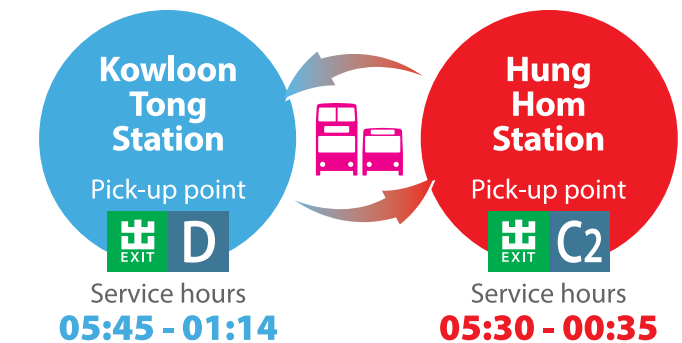
<sup>2</sup> If you are not using an Octopus and change Lines between Tsim Sha Tsui and East Tsim Sha Tsui, you will need to purchase two separate Single Journey Tickets. This means paying a higher total fare when compared to an alternative route and directly interchanging at another station (such as Kowloon Tong, Mei Foo or Nam Cheong) where only one Single Journey Ticket is required

### Other public transport

You can also consider using other public transport. Detailed information will be displayed in the concourse at Hung Hom and Kowloon Tong stations.

### Free MTR shuttle bus service

A free MTR shuttle bus service will be provided between Hung Hom and Kowloon Tong stations (non-stop, no intermediate station)<sup>^</sup> during the suspension day(s). Please follow the special signs directing you to the pick-up point. A waiting time should be expected due to unknown road traffic conditions.



<sup>^</sup> Simply tap your Octopus to the reader before boarding the bus and your next MTR journey from Hung Hom/ Kowloon Tong stations on the same day will be free (except for Airport Express and East Rail Line First Class Premium)



Terms and Conditions apply