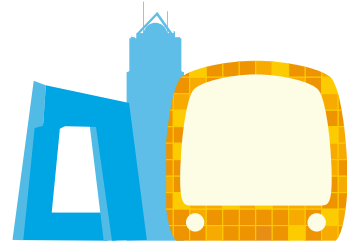
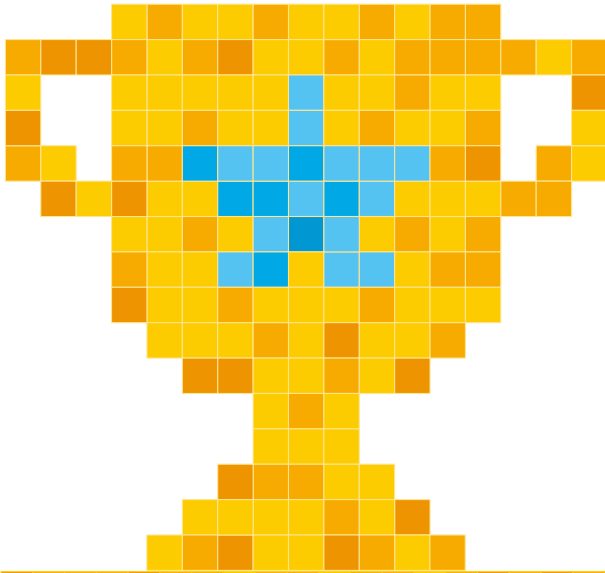
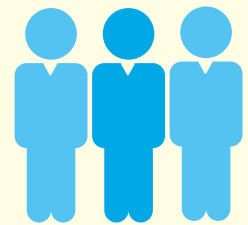


PERFORMANCE

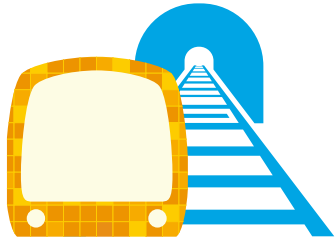


High Speed Rail

commenced service
in September

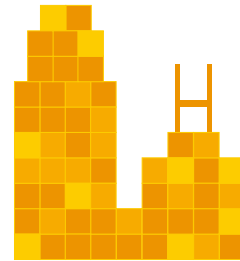


Over
2.0 billion
Total patronage in
Hong Kong



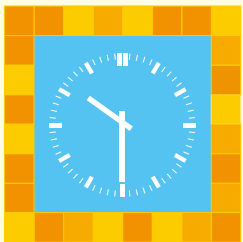
Shatin to Central Link

88.7% complete



Awarded 3

property packages



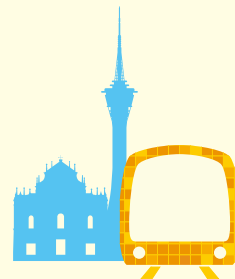
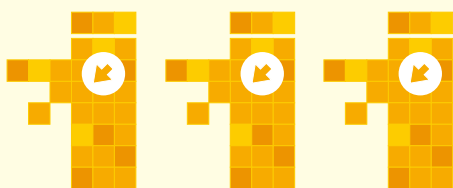
99.9%

Passenger Journeys
on-time



8%

fewer reportable
events on our
heavy rail network



Awarded

Macau Light Rapid
Transit Taipa Line



Over 2.1 billion

Total patronage outside
of Hong Kong