

### **Double Celebration for Shatin to Central Link Topping Out and New Names Announced for Two Stations in Kowloon City**

The Shatin to Central Link (SCL) project has achieved another milestone with the structural completion of the two stations in Kowloon City. This new chapter was marked with the announcement of the formal names of the two stations, i.e. "To Kwa Wan Station" and "Sung Wong Toi Station". These are the last two stations completed along the Tai Wai to Hung Hom Section, signifying the substantial completion of civil works of the new East West Corridor.

Mr Joseph YT Lai, Permanent Secretary for Transport and Housing (Transport), and Mr Lincoln Leong, Chief Executive Officer of MTR Corporation officiated at the topping out ceremony today (27 November 2017) in the presence of representatives of the local community and working partners.

Speaking at the ceremony, Mr Joseph Lai noted the structural completion of all new stations along the Tai Wai to Hung Hom Section of the SCL as an important milestone that marked a further step towards the commissioning of the railway in mid-2019. This railway provides a more convenient service for passengers who travel between New Territories East and New Territories West, and for areas in Shatin and Kowloon that are not connected with railway network at present. In addition to enhancing the railway network in Hong Kong, the SCL also contributes towards archaeological conservation by preserving in-situ most of the relics unearthed at the works site.

Mr Lai said, "We are aware of the local community's aspiration for a station that can reflect its characteristics as a monument of the Sung Dynasty. Therefore, the Government has decided to name this station as Sung Wong Toi Station. To address the views of the district council and local residents, the Government has also decided to rename Ma Tau Wai Station as To Kwa Wan Station. We hope these names will add local touch to the stations and they will become an integral part of the local community."

Dr Philco Wong, Projects Director of MTR Corporation remarked, "Completion of the main civil works is a significant milestone which clearly shows that we are on track towards commissioning the SCL East West Corridor in mid-2019. We know that the Kowloon City Community has been eagerly looking forward to this new railway service, and the Corporation has been working on full steam to make this happen. I would like to thank local residents and businesses for their patience whilst we continue to take forward the project with our best efforts."

"Discovery of Sung Yuan archaeological finds has previously affected the works progress in this area. The Corporation has adjusted the design of the station and works sequence having regard to expert advice from relevant authorities, so that these cultural assets will be protected or unearthed for future display for the benefit of the community. Delay recovery measures have been successfully implemented to mitigate some of the delay caused by the discovery," Dr Wong added.

-more-

Now that the structural works are complete, fitting-works for the sophisticated and intertwined railway systems have commenced. On-going works along the section from Sung Wong Toi to Hung Hom comprise the fitting out of communications equipment, signalling system, tunnel ventilation, platform screen doors and overhead line equipment. As for the Kai Tak to Hin Keng section, works have recently progressed to a more advanced stage with passenger trains running on the track as part of the dynamic testing of various railway systems.

With a total length of 56 kilometres and 27 stations, the SCL East West Corridor extends the existing Ma On Shan Line from Wu Kai Sha Station via Tai Wai Station through East Kowloon to connect with the West Rail Line from Hung Hom Station and all the way up to Tuen Mun. Upon commissioning, this will be the city's longest railway line and passengers will be able to travel directly between the east and west of the New Territories. In particular, the accessibility of Kowloon City will be enhanced like never before with its first railway connection to the wider Hong Kong network.

- End -

#### About MTR Corporation

MTR Corporation is regarded as one of the world's leading railway operators for safety, reliability, customer service and cost efficiency. In its home base of Hong Kong, the Corporation operates ten commuter railway lines, a Light Rail network and a high-speed Airport Express link on which about 5.6 million passenger trips are made on a normal week day. Another 5.6 million passenger trips are made on the rail services it operates outside Hong Kong in the Mainland of China, the United Kingdom, Sweden and Australia. In addition, the Corporation is involved in a range of railway construction projects as well as railway consultancy and contracting services around the world. Leveraging on its railway expertise, the Corporation is involved in the development of transit-related residential and commercial property projects, property management, shopping malls leasing and management, advertising media and telecommunication services.

For more information about MTR Corporation, please visit [www.mtr.com.hk](http://www.mtr.com.hk).

Photos Captions:

1. (From left) Mr Lincoln Leong, Chief Executive Officer of MTR Corporation, Mr Joseph YT Lai, JP, Permanent Secretary for Transport and Housing (Transport) and Mr Pun Kwok-wah, JP, Chairman of Kowloon City District Council unveiled the new name of the station beneath Ma Tau Wai Road and To Kwa Wan Market as "To Kwa Wan", whereas the one near the historical Sung Wong Toi Park will be named as "Sung Wong Toi".



2. (From left) Ir Paul Lee, Construction – Managing Director of Hsin Chong Construction Company Limited, Mr Ho Hin-ming, BBS, MH, Chairman of Working Group on the Shatin to Central Link under Kowloon City District Council, Mr Pun Kwok-wah, JP, Chairman of Kowloon City District Council, Mr Lincoln Leong, Chief Executive Officer of MTR Corporation, Mr Joseph YT Lai, JP, Permanent Secretary for Transport and Housing (Transport), Mr Daniel Chung Kum-wah, JP, Director of Highways, Dr Philco Wong, Projects Director of MTR Corporation, Mr TM Lee, General Manager – SCL and Head of E&M Construction of MTR Corporation and Mr John Chang, President, Global Business and Operations of Samsung C&T Corporation officiated at the structural completion ceremony of the two stations in the Kowloon City Section of the SCL.

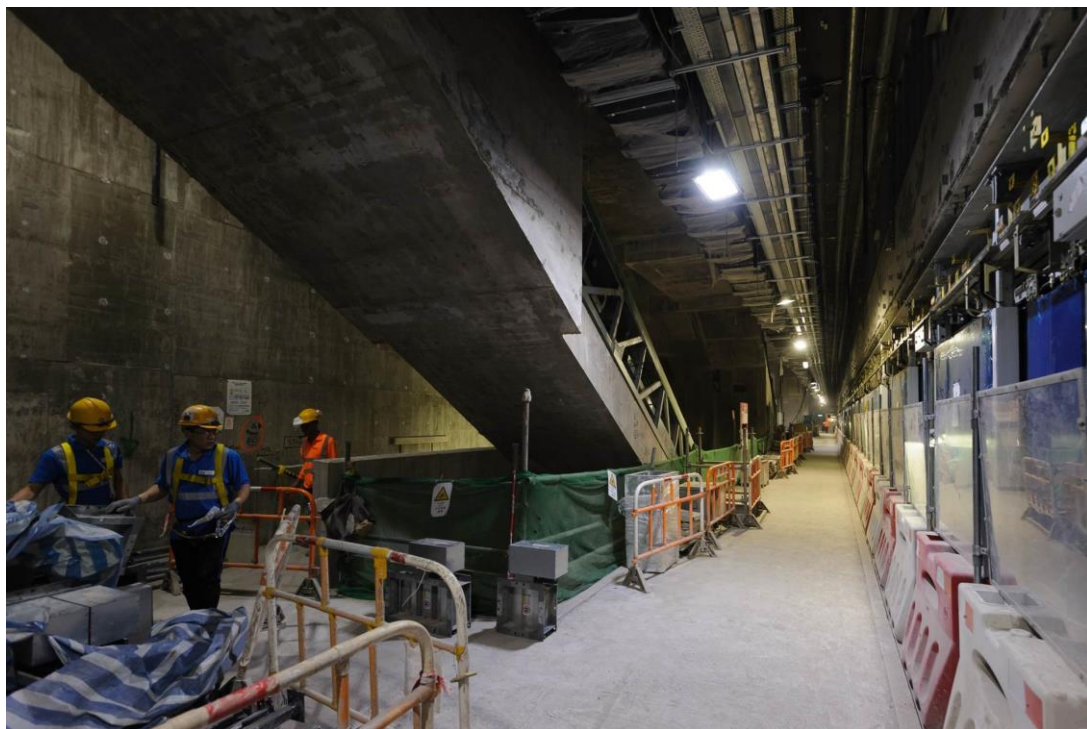




3. Construction of To Kwa Wan and Sung Wong Toi stations, which are both underground, commenced in 2012 and structural completion was recently achieved.

To Kwa Wan Station

To Kwa Wan Station consists of three levels, with its concourse at the top and platforms at the two lower levels.





### Sung Wong Toi Station

Sung Wong Toi Station has two underground levels with an island platform beneath the station concourse.

