

PRESS STATEMENT

11 November 2019

### **MTR Strongly Condemns Rioters for Hurling Petrol Bombs into MTR Stations and Trains**

Rioters repeatedly hurled petrol bombs and set fires at operating stations and trains today (11 November 2019). Objects were also thrown onto track sections and running trains, which severely endangered the safety of passengers and MTR staff. During the course of the day, 32 MTR stations were forced to be closed down and train service on certain sections of several railway lines had to be suspended. The MTR Corporation expresses its strong indignation and condemnation over rioters' unlawful acts and has reported the cases to the Police. The Corporation reserves the right to take further action against the parties concerned.

Rioters began to disrupt the operation of MTR from the early hours of the morning by placing various objects such as bicycles and wooden ladders onto track areas along the open sections of the East Rail Line. Subsequently, MTR staff removed the objects, so that normal service of the first train service could begin. However, at around 6 a.m., the windscreens of two trains in passenger service were damaged by objects falling from height when they were passing through the section near Fanling Station. One of the windscreens was even punctured by a hard object. These incidents have seriously impacted on the safety of train operations.

Later on, two other trains were respectively reported to have hit a water-filled barrier near Sheung Shui Station and run over a bicycle which was placed on the track near University Station. It was very fortunate that there were no casualties in an incident of such a serious nature. MTR personnel removed the bicycle and arranged for the train to leave the scene for detrainment after confirming the train was safe to move. In view of the continuous risk of objects being hurled at trains or onto the track, the train service between Fo Tan and Lo Wu/Lok Ma Chau stations was suspended to ensure safe operation and the safety of passengers and staff.

Furthermore, rioters hurled petrol bombs and set fires in stations and trains. At around 7 a.m., Tung Chung Station was attacked with petrol bombs. Half an hour later, a fire was set in Heng On Station on the Ma On Shan Line. Both stations activated emergency evacuation and station closure procedures. At around 8 a.m., rioters opened the rear emergency exit ramp of a Central-bound Tsuen Wan Line train without authorisation and also hurled two petrol bombs into the train when it was carrying out platform duty at Kwai Fong Station. The platform staff immediately put out the fire with fire extinguishers and evacuated passengers from Kwai Fong Station. All trains were arranged to bypass the station afterwards. It was very fortunate that no passengers were reported to have been injured in these incidents.

-more-

In addition, there was a number of unauthorised activation of emergency exit ramp cases on the Island Line, Kwun Tong Line and Tsueng Kwan O Line which severely affected railway operation. A number of stations were also vandalised by gangs of rioters. In total, 32 MTR stations were forced to close this morning. Besides the East Rail Line, train services between Lai King and Tsuen Wan stations on the Tsuen Wan Line, between Kam Sheung Road and Tuen Mun stations on the West Rail Line, between Yau Tong and Po Lam/LOHAS Park stations on the Tsueng Kwan O Line, and between Kwun Tong and Tiu Keng Leng stations on the Kwun Tong Line also had to be suspended for safety reasons.

The Corporation has provided free shuttle bus services for the passengers affected where possible, and maintained close contact with the Transport Department about the arrangement. However, due to road congestion and unexpected conditions, we were not able to provide free shuttle bus service in some places. Passengers might have experienced longer than normal waiting time even when the service was available.

For the Light Rail, due to public processions and road blockages, services of Light Rail routes 614, 615, 705, 706 and 761P were temporarily suspended. Several other routes were diverted.

MTR Corporation expresses deep indignation and strong condemnation over the series of violent disruptions and vandalism targeting the MTR network today. We cannot tolerate these illegal acts of rioters which have severely endangered the safety of passengers, MTR staff and railway facilities. We have reported the cases to the Police and reserve all rights to take further action against the parties concerned.

The MTR Corporation is committed to providing safe services to our passengers. We will continue to closely monitor the situation. If actions disrupting the safe operation of stations and railway lines continue, we may not be able to resume the suspended services and may need to further suspend or adjust the services of other stations or sections. The Corporation will disseminate the relevant information via the MTR website, MTR Mobile, station and in-train announcements as well as the media. Passengers are advised to pay attention to the latest service information.

- End -

Photo Captions:

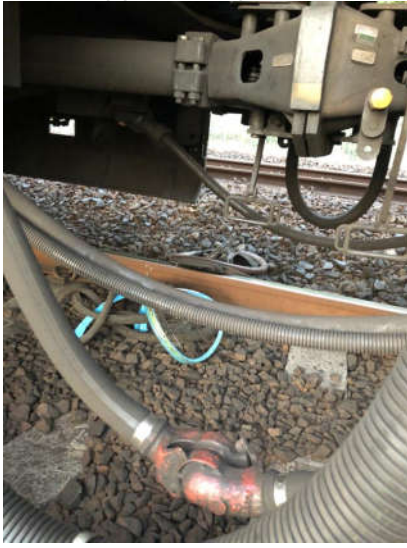
1. Two bicycles and two wooden ladders were placed on the track area between Sha Tin and Tai Wan stations.



2. The windscreen of a running East Rail Line passenger train was damaged by falling objects thrown from height near Fanling Station.



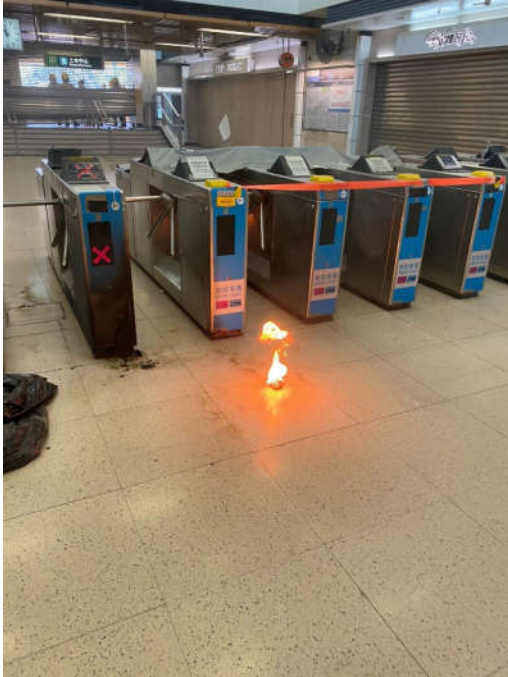
3. A bicycle was found on the track area between Tai Po Market and University stations. An approaching East Rail Line train was applied its brake but still ran over the bicycle.



4. Station facilities at University Station on East Rail Line were vandalised. Various objects were placed onto the track area.



5. A fire was set at entry/ exit gates of Sheung Shui Station on the East Rail Line.



6. Customer Service Centre and entry/ exit gates at Shatin Station on the East Rail Line were vandalised.



7. Two petrol bombs were hurled into a train compartment of a Central-bound train at Kwai Fong Station on the Tsuen Wan Line.



8. Station facilities of Kwai Hing Station on the Tsuen Wan Line were vandalised.



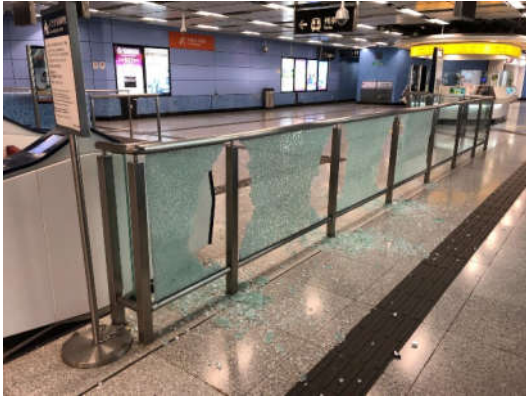
9. Station facilities and glass panels on automatic platform gates were vandalised at Ma On Shan Station on the Ma On Shan Line.



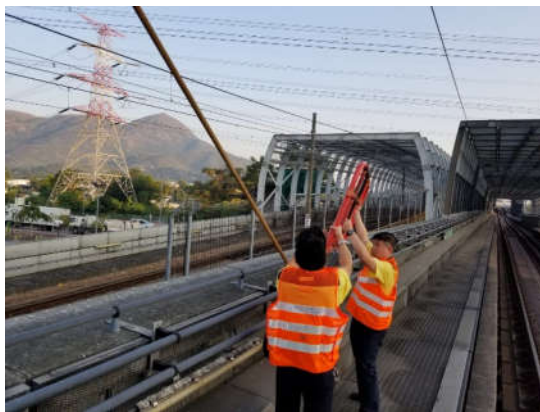
10. An emergency ramp of the rear cab of a North Point-bound train was opened at Tiu Keng Leng Station on the Tseung Kwan O Line.



11. Station facilities at Whampoa Station on the Kwun Tong Line were maliciously vandalised.

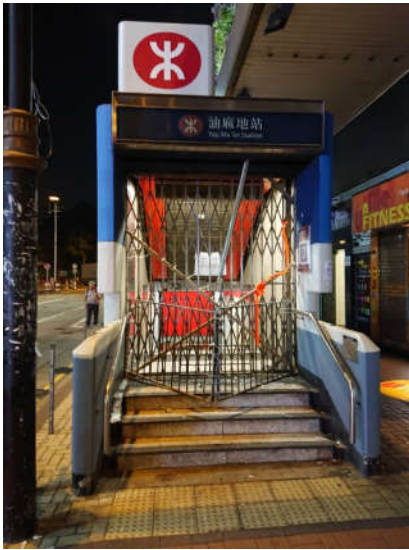


12. Foreign objects were thrown onto the open section of Siu Hong Station on the West Rail Line.





13. Five entrances/ exits at Yau Ma Tei Station were set on fire or vandalised.



14. Station facilities at Tsuen Wan West Station on the West Rail Line were vandalised.

