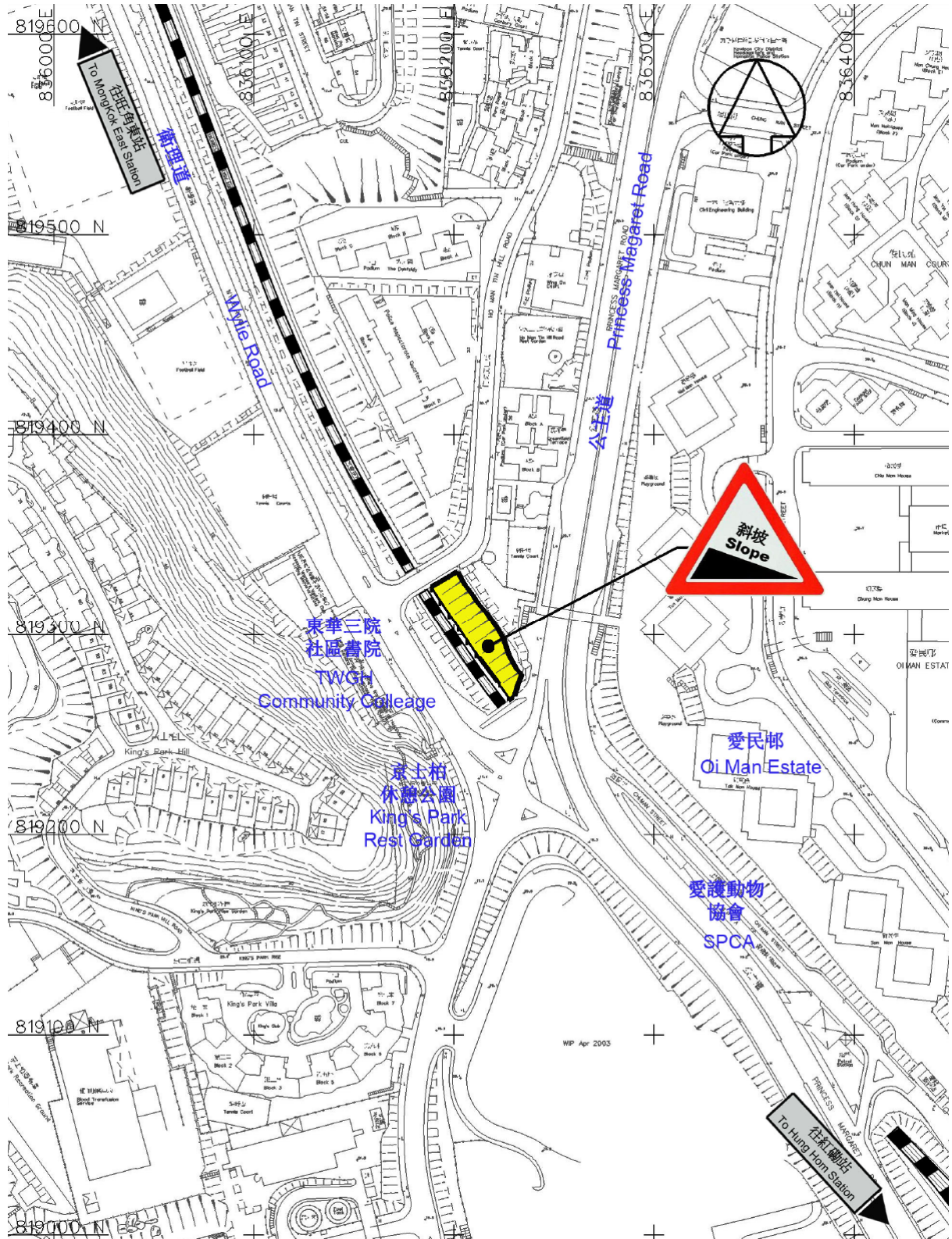


第三期東鐵綫斜坡改善工程
East Rail Line Slope Improvement Works - Phase III

改善工程位置:	紅磡站及旺角東站之間 (東華三院社區書院對面)
Location of Improvement Works:	Between Hung Hom Station and Mong Kok East Station (Opposite to TWGH Community College)

位置圖 Location Map



第三期東鐵綫斜坡改善工程
East Rail Line Slope Improvement Works - Phase III

改善前 Before Improvement

