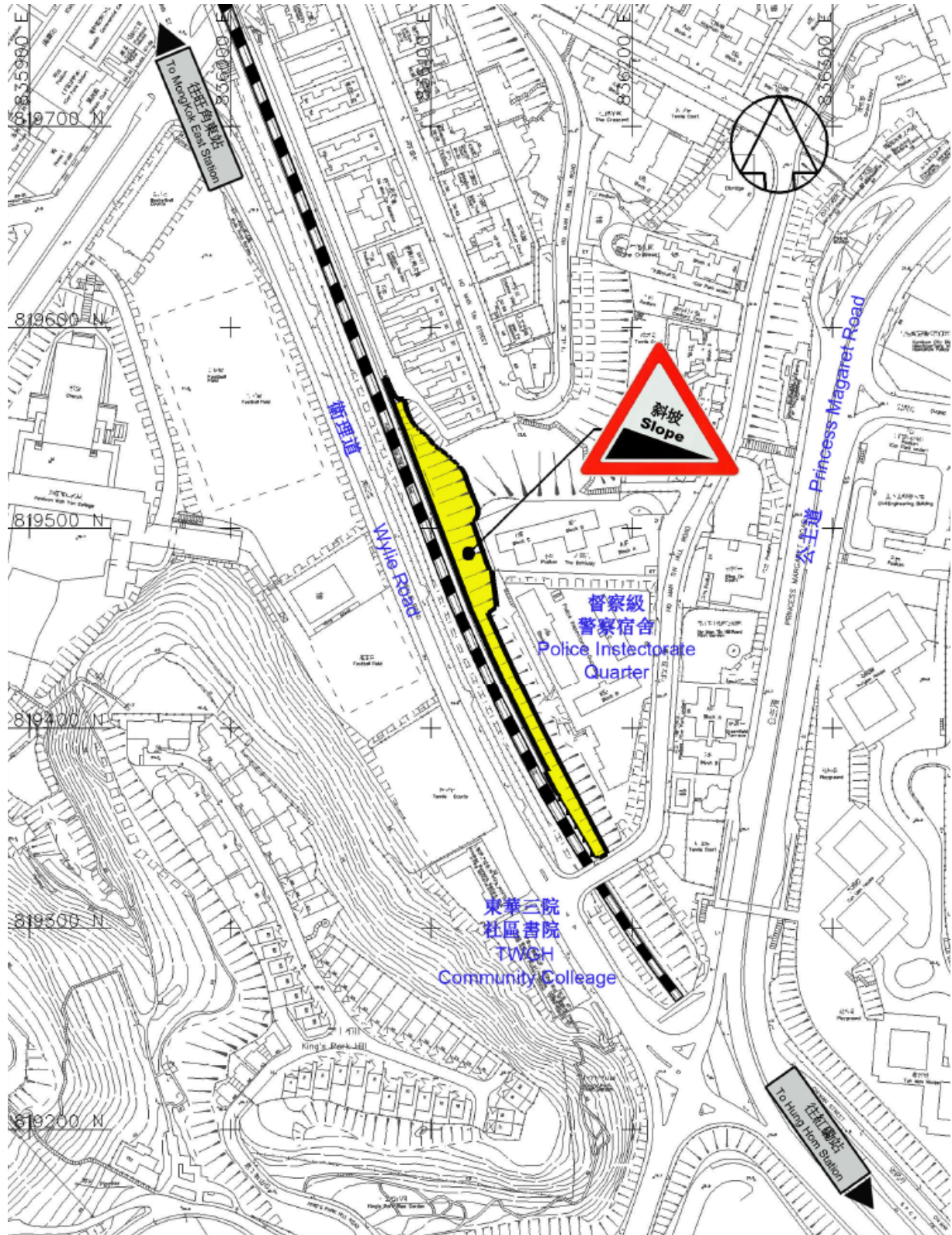


# 第一期東鐵綫斜坡改善工程

## East Rail Line Slope Improvement Works - Phase I

改善工程位置:	紅磡站及旺角東站之間 (近督察級警察宿舍)
Location of Improvement Works:	Between Hung Hum Station and Mong Kok East Station (Near Police Inspectorate Quarters)

位置圖 Location Map



第一期東鐵綫斜坡改善工程  
East Rail Line Slope Improvement Works - Phase I

改善前 Before Improvement



改善後 After Improvement

