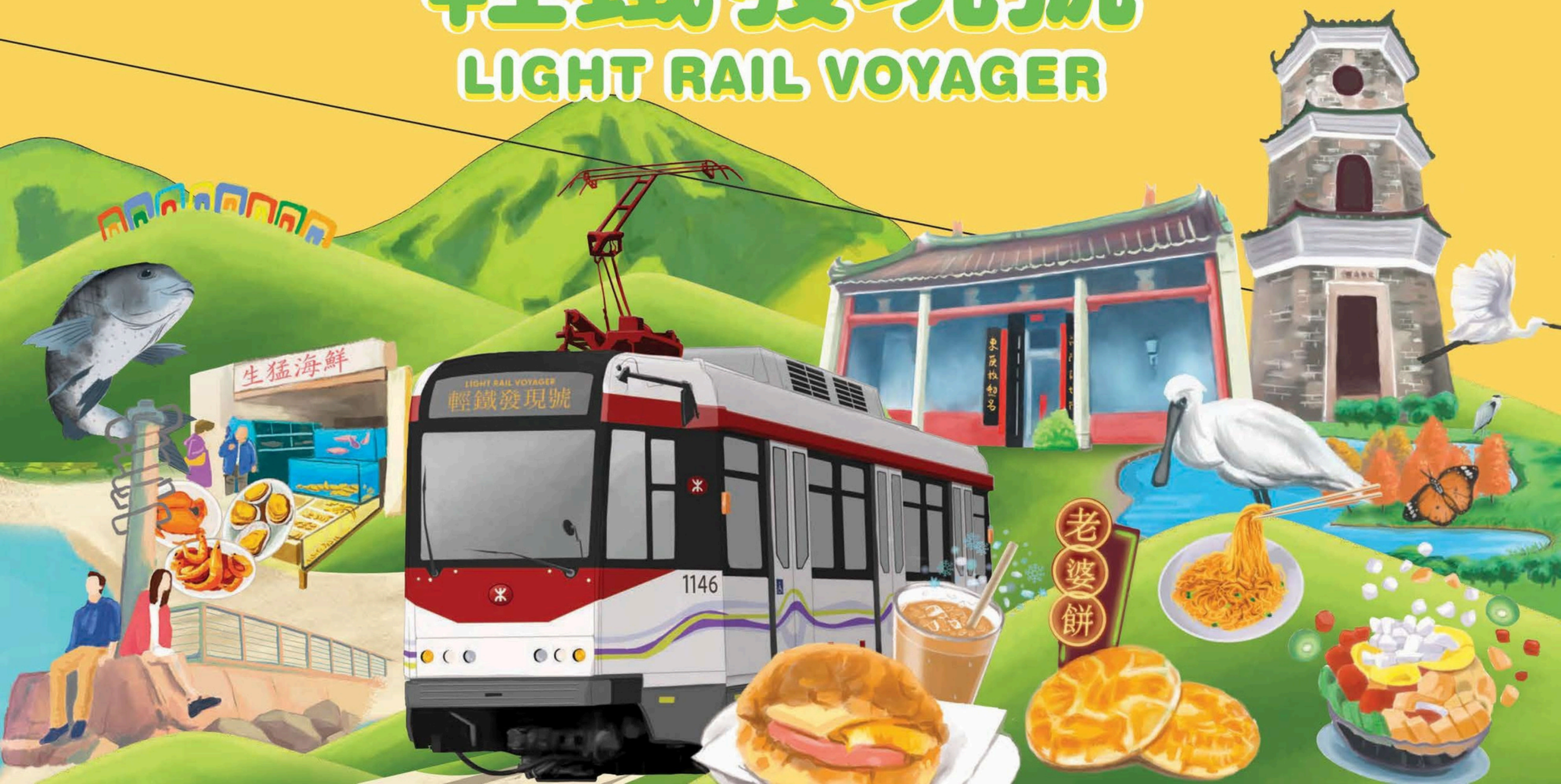


假日限定旅遊專線

輕鐵發現號

LIGHT RAIL VOYAGER



How to Join



假日限定旅遊專線
輕鐵發現號
LIGHT RAIL VOYAGER

Light Rail Voyager

Light Rail Sightseeing Route, "Light Rail Voyager", operates exclusively on weekends and public holidays. The two major sightseeing routes, "Yuen Long Sightseeing Route" and "Tuen Mun Sightseeing Route" bring passengers to explore the unique charm of different corners of Yuen Long and Tuen Mun districts. The themed Light Rail vehicles for both sightseeing routes are adorned with distinctive illustrations. Come and join us on "Light Rail Voyager" during the weekend or on public holidays! Discover Yuen Long and Tuen Mun together!

Sightseeing Routes

• Yuen Long Sightseeing Route •



• Tuen Mun Sightseeing Route •



How to Join

To ride the "Light Rail Voyager" you must hold a valid "Light Rail Travel Pass" with a same-day stamp. The "Light Rail Voyager" Travel Pass Package can be purchased at:

- Within the train compartments of "Yuen Long Sightseeing Route" and "Tuen Mun Sightseeing Route"
- Customer Service Centres at the below MTR Light Rail Stations: Tin Yat Stop, Yuen Long Stop, Tuen Mun Ferry Pier Stop, and Leung King Stop
- Customer Service Centres at the below MTR Stations: Yuen Long Station and Siu Hong Station



The package includes:

- ✓ "Light Rail Voyager" Themed Envelope
- ✓ "Light Rail Travel Pass" #
- ✓ Various coupons

Total Value exceeding \$200

Price:

\$68

(Only accept electronic payments*)

* Accepted electronic payment methods: Octopus Card, QR code payments (including Alipay HK/Mainland, WeChat Pay HK/Mainland, and UnionPay QR) and contactless credit cards (Visa, Mastercard, and UnionPay)

Octopus Cards Limited shall have no responsibility for the goods or services provided by Service Provider.

*Light Rail Travel Pass Terms and Conditions

1. The "Light Rail Travel Pass" is valid only when stamped with the validity date. The Pass is valid for unlimited journeys on the "Light Rail Voyager" Yuen Long and Tuen Mun Sightseeing Routes and all Light Rail routes until the end of the service of the validity date. Any attempt to alter or tamper with the stamp date will render the pass invalid.
2. The "Light Rail Travel Pass" is not valid for MTR Bus services and the interchange discount of the Tuen Ma Line.
3. Upon request by an official (as defined in the Mass Transit Railway (North-west Railway) Bylaw ("By-law")), passengers must present the valid "Light Rail Travel Pass" with a stamped validity date for ticket inspection or verification.
4. The "Light Rail Travel Pass" can only be used by one passenger and cannot be shared.
5. The "Light Rail Travel Pass" is issued subject to the By-law.
6. The "Light Rail Travel Pass" is non-refundable and non-replaceable under any circumstances.
7. The Contracts (Rights of Third Parties) Ordinance shall not apply to the terms and conditions herein.
8. The MTR Corporation Limited reserves the right to decide in any dispute.

Timetable



假日限定旅遊專線
輕鐵發現號
LIGHT RAIL VOYAGER

(The following times are Light Rail departure times)

Yuen Long Sightseeing Route

Stop	Platform	1 st Train	2 nd Train
Yuen Long	Platform 1	11:00	14:30
Tai Tong Road	Platform 2	11:03	14:33
Hong Lok Road	Platform 2	11:05	14:35
Fung Nin Road	Platform 2	11:07	14:37
Shui Pin Wai	Platform 2	11:09	14:39
Ping Shan	Platform 2	11:11	14:41
Hang Mei Tsuen	Platform 1	11:16	14:46
Tin Shui Wai	Platform 2	11:19	14:49
Wetland Park	Platform 1	11:31	15:01
Tin Yat	Platform 3	Terminus	Terminus

Tuen Mun Sightseeing Route

Stop	Platform	1 st Train	2 nd Train
Siu Hong	Platform 4	11:00	14:30
Kei Lun	Platform 2	11:02	14:32
Choy Yee Bridge	Platform 2	11:08	14:38
Shan King (South)	Platform 1	11:13	14:43
Lung Mun	Platform 2	11:21	14:51
Butterfly	Platform 2	11:24	14:54
Melody Garden	Platform 2	11:26	14:56
Tuen Mun Ferry Pier	Platform 6	11:30	15:00
Tuen Mun Swimming Pool	Platform 1	11:35	15:05
Sam Shing	Platform 2	11:41	15:11
Town Centre	Platform 2	12:02	15:32
Tuen Mun	Platform 1	Terminus	Terminus

Yuen Long Sightseeing Route

Wetland Park

Tin Yat

Tin Shui Wai

Hang Mei Tsuen

Ping Shan

Shui Pin Wai

Fung Nin Road

Hong Lok Road

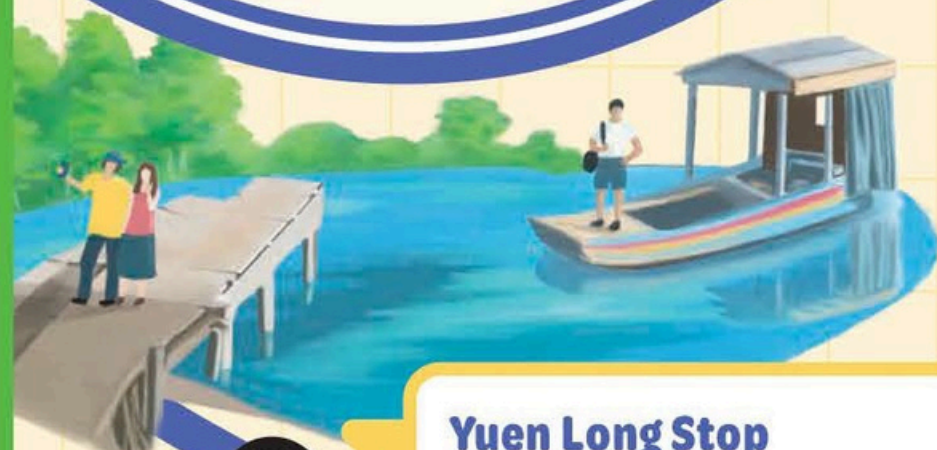
Tai Tong Road

Yuen Long

假日限定旅遊專線
輕鐵發現號
LIGHT RAIL VOYAGE
• Yuen Long Sightseeing Route

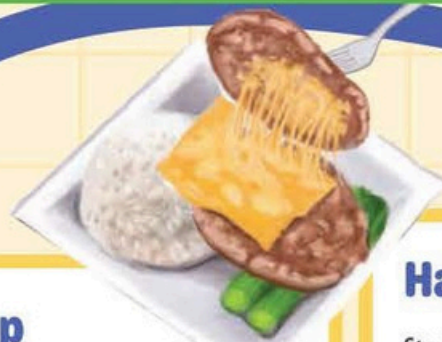
• Yuen Long Sightseeing Route •

Light Rail Explorer



Ping Shan Stop

The area around Ping Shan Stop offers a rich blend of local eats and traditional walled village heritage, ideal for a culturally immersive stroll. Nearby, Tong Fong Village is famed for its creative pork patties, topped with everything from six-cheese blends, mango or curry. With generous portions and friendly prices, they are highly recommended by locals! Tucked among the village lanes are lovely cafés perfect for snapping photos and indulging in satisfying treats.



Hang Mei Tsuen Stop

Starting from Hang Mei Tsuen Stop, take the 1.6-kilometre Ping Shan Heritage Trail to discover iconic historical sites like Sheung Cheung Wai, Tang Ancestral Hall, Yu Kiu Ancestral Hall, and Yeung Hau Temple. As you walk, you'll encounter ancient wells, stone inscriptions, and ancestral halls that reflect the deep cultural legacy of walled villages and the Tang clan. If your visit happens to align with a village market or festival, take the opportunity to sample traditional snacks that bring the area's heritage to life.



Tin Shui Wai Stop

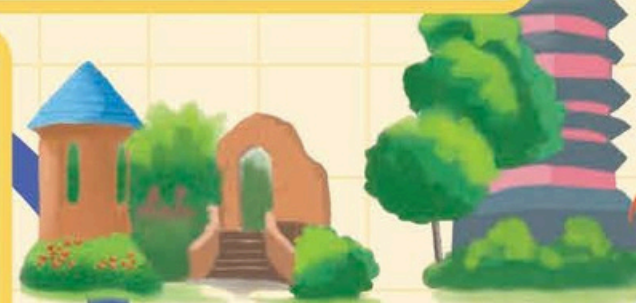
From Tin Shui Wai Stop, don't miss Tsui Sing Lau Pagoda — a declared monument with over 600 years of history! Just a short stroll away, a beloved chaan teng serves up freshly baked pineapple buns and its famous iced milk tea. The area also boasts trendy artisan bakeries and cosy coffee spots. For a scenic detour, hop on MTR Bus K65 to reach Lau Fau Shan and Ha Pak Nai. Ha Pak Nai has sweeping mudflats, lush mangroves and remnants of historic salt pans. Finally, wrap up your outing on a delicious note with a seafood feast at Lau Fau Shan.

Yuen Long Stop

Just a 20-minute walk from the stop, Nam Sang Wai offers a tranquil escape into nature. A wooden bridge stretches across serene wetlands and fish ponds, where you might catch glimpses of egrets or water buffalo. It is an idyllic route for a peaceful stroll, making it a go-to photo spot. Hop on the cable ferry and enjoy a charming ride across the river.

Shui Pin Wai Stop

A short walk from Shui Pin Wai Stop leads you to Yuen Long Park, a serene escape known for its lush landscapes and distinctive architecture. At its heart lies an aviary tucked beneath the Aviary Pagoda — climb to the top for views of the Yuen Long skyline, tranquil lake and surrounding greenery. Meander along peaceful lakeside trails, where gentle waterfalls add to the charm. Be sure to visit the park's Nordic-style cottage, a hidden gem and an amazing photo spot for visitors seeking quiet beauty.



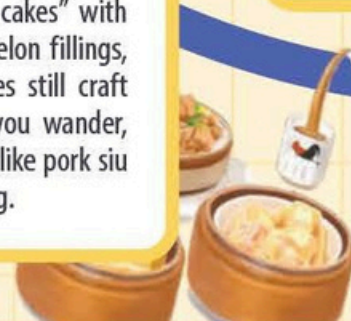
Hong Lok Road Stop

The area surrounding Hong Lok Road Stop is a haven for beloved neighbourhood snack stalls. Along Kau Yuk Road, you'll encounter timeless street eats like waffles, egg puffs, siu mai and faux shark's fin soup. Craving something heartier after your stroll? A well-known noodle shop here draws fans with its springy shrimp roe noodles, while its Pork Wrap dumplings and wonton soup offer a nostalgic nod to tradition. Nearby, a celebrated beef ball shop prides itself on crafting 100% fresh beef balls daily - each juicy, bouncy, and packed with meaty flavours. And for a truly satisfying finish, the iconic satay beef noodles deliver a rich, peanut-spiced broth, tender slices of beef, and perfectly chewy noodles.



Tai Tong Road Stop

Near Tai Tong Road Stop, Yuen Long's bustling streets come alive with the aroma of local snacks and the timeless allure of historical shops. A century-old bakery serves flaky "wife cakes" with delicately sweet winter melon fillings, while traditional teahouses still craft handmade dim sum. As you wander, don't miss local favourites like pork siu mai and silken tofu pudding.



Fung Nin Road Stop

Fung Nin Road boasts a vibrant mix of eateries, each with its own charm. One standout is a retro Japanese-style café celebrated for its extra-thick hotcakes, which are irresistibly fluffy with a rich aroma of butter and eggs. Just steps away, a beloved dessert shop draws crowds with its signature grass jelly fruit bowl, made with fresh ingredients and served in generous portions. Their famous chicken wing tips are a local favourite too, earning the spot a reputation as one of Yuen Long's top destinations for savory and sweet indulgence.



Wetland Park Stop

Hong Kong Wetland Park blends conservation, education and eco-tourism — an ideal destination for families, nature lovers and photography buffs. At its core is the Wetland Reserve, a sprawling sanctuary featuring diverse habitats like marshes, mangroves, freshwater ponds and scenic boardwalks. Visitors can get up close to a wide array of waterbirds, amphibians and wetland plants, making each visit an interesting and immersive experience.

假日限定旅遊專線
輕鐵發現號
LIGHT RAIL VOYAGER

• Yuen Long Sightseeing Route •

Walled Village Cultural Insights

Ping Shan's "Three Wais (walled villages) and Six Tsuens (villages)"

Ping Shan in Yuen Long stands as one of Hong Kong's oldest and most culturally rich areas. Walking the Ping Shan Heritage Trail reveals a tapestry of relics tied to the city's walled village legacy. After settling in the area, the Tang clan founded the "Three Wais and Six Tsuens", constructing ancestral halls, temples, study halls and iconic landmarks like Tsui Sing Lau Pagoda — the city's only remaining ancient pagoda with 500 years of history — offering a vivid glimpse into centuries of tradition and heritage.

Village Beliefs

Thanks to its proximity to rivers and the sea, Yuen Long historically thrived on salt farming, oyster cultivation and river transportation. Villages commonly worshipped Tin Hau (Goddess of the Sea), seeking her blessings for safe journeys and bountiful catches. The annual Tin Hau Festival remains a highlight in walled village life, marked by vibrant fa pao paper floral tributes, bamboo theatres, lion and dragon dances, sedan chair parades accompanied by the rhythmic beat of gongs and drums, and Cantonese operas for appeasing gods. This cherished tradition has been declared part of UNESCO's Intangible Cultural Heritage of Humanity.

Rituals & Customs

The "lantern lighting" ritual in Yuen Long's walled villages is a long-standing tradition that honours the birth of newborn boys. Families light red lanterns to inform ancestors and pray for blessings, symbolising prosperity and the continuation of the family line.

Poon Choi and Village Banquets

During festive celebrations in the New Territories' walled villages, locals traditionally gather around poon choi — a communal dish stacked high with layer after layer of deliciousness using a large basin. Premium and delicate items like chicken and prawns are placed on top, while hearty ingredients such as pork skin and radish sit below, soaking up the flavourful broth. In coastal villages, poon choi is often elevated with fresh oysters and dried seafood sourced from nearby coastal areas like Lau Fau Shan.

Local Craftsmanship

During festivals, ancestral rites or newborn celebrations, village women come together to prepare traditional rice cakes and dumplings. Made with glutinous rice casings, these delicacies are filled with cherished family recipes, such as crushed peanuts with sesame, preserved radish with dried shrimp, mung bean paste or dried turnip. Steamed in batches at ancestral halls or village gateways, they are then shared among relatives and neighbours. Over time, these rice cakes have come to symbolise blessings, fostering harmony and joy throughout the community.

Architecture & Defensive Design

Walled villages were built with "community protection" in mind: fortified by thick walls, a single entrance gate and few outer windows to deter intruders. Their layout followed a central axis connecting ancestral halls and communal spaces in a symmetrical design for enhanced defence. This architectural approach was a response to pirate raids and weak law enforcement at the time, while fostering a strong sense of mutual support and collective resilience among villagers.

Wai Tau Dialect

Wai Tau Dialect is a dialect once commonly spoken by early settlers in the New Territories. It served as the main language among land-based communities in Hong Kong before the 19th century and was officially listed in the First Intangible Cultural Heritage Inventory of Hong Kong in 2014. Today, however, it has largely faded from daily use and is rarely heard in public spaces.

Wai Tau dialect	Cantonese	English
痾禮 (o1 lai5)	哎呀 (aai1 aa3)	Oh no!
去酸頭 (heoi3 syun1 tau4)	去邊度 (heoi3 bin1 dou6)	Where are you going?
Dee唔Dee (di1 m4 di1)	知唔知道 (zi1 m4 zi1 dou3)	Do you know?
碌隊 (luk1 deoi2)	煎堆 (zin1 deoi1)	Deep-fried sesame balls
冷唔冷 (laang1 m4 laang1)	靚唔靚 (leng3 m4 leng3)	Is it beautiful?
乃誰 (naai4 seoi4)	邊個 (bin1 go3)	Who?

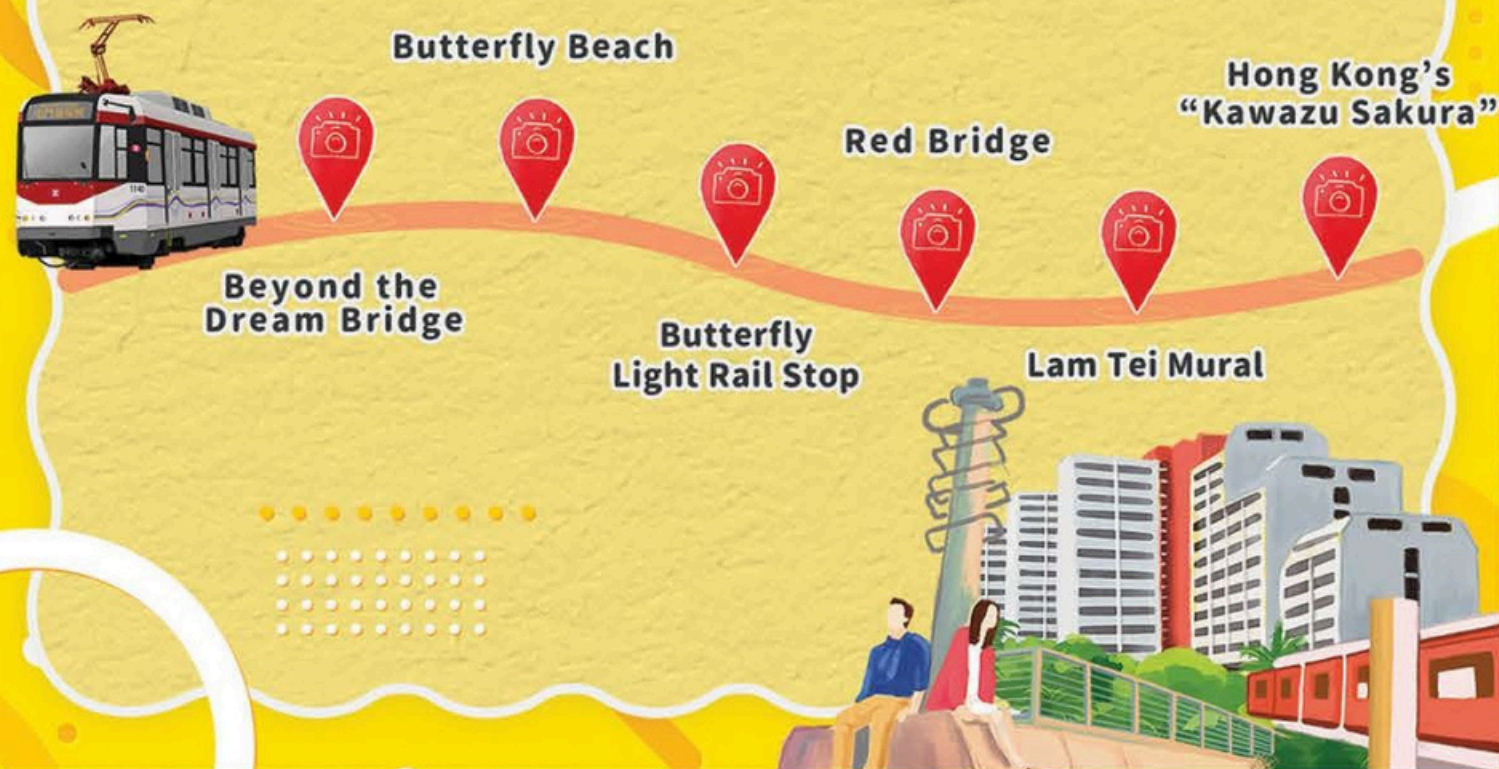
Tuen Mun Sightseeing Route



假日限定旅遊專線
輕鐵發現號
LIGHT RAIL VOYAGER

• Tuen Mun Sightseeing Route •

Leisure Photography Tour



3rd Stop Red Bridge

Choy Yee Bridge Stop



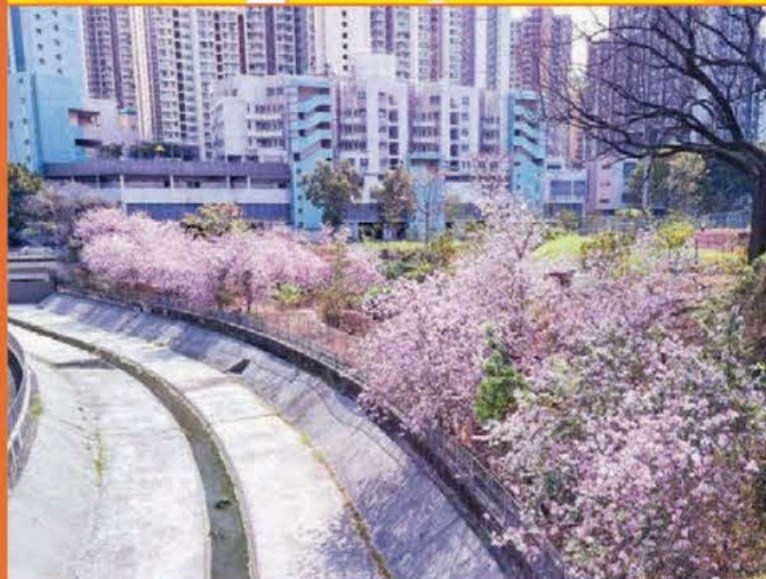
4th Stop Butterfly Light Rail Stop

Butterfly Stop



1st Stop Hong Kong's "Kawazu Sakura"

Siu Hong Stop



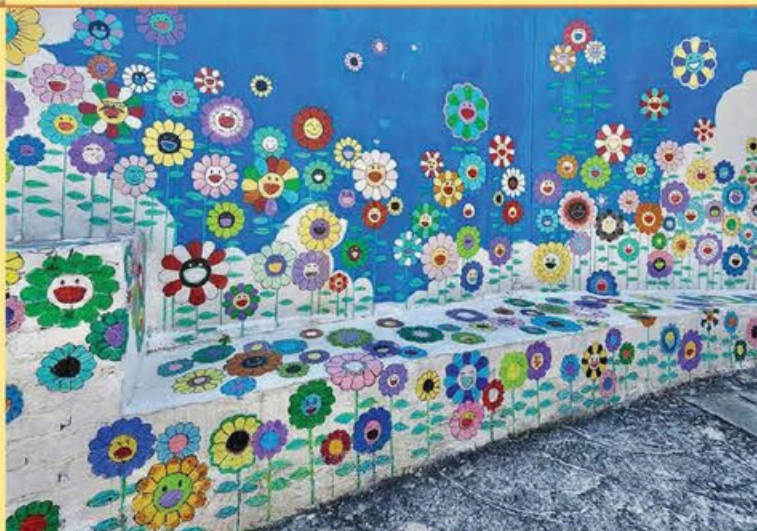
5th Stop Butterfly Beach

Melody Garden Stop



2nd Stop Lam Tei Mural

Siu Hong Stop



6th Stop Tuen Mun Promenade (Beyond the Dream Bridge)

Tuen Mun Ferry Pier Stop



假日限定旅遊專線
輕鐵發現號
LIGHT RAIL VOYAGER
• Tuen Mun Sightseeing Route •

Foodie Tour

Lung Mun
Oasis Midnight
Food Street

Hakka
Restaurant

Sam Shing
Seafood Market

Tseng Choi
Street



2nd Stop

Tseng Choi Street

 **Choy Yee Bridge Stop**

3rd Stop

Lung Mun Oasis
Midnight Food Street

 **Lung Mun Stop**



1st Stop

Hakka Restaurant

 **Kei Lun Stop**



4th Stop

Sam Shing
Seafood Market

 **Sam Shing Stop**

假日限定旅遊專線
輕鐵發現號
LIGHT RAIL VOYAGER

• Tuen Mun Sightseeing Route •

Family Tour



Siu Hei Sportsground

School of Everyday Life

Castle Peak Bay

Bouldering Field

Reptile House



3rd Stop

Bouldering Field

 **Shan King (South) Stop**

4th Stop

Siu Hei Sportsground

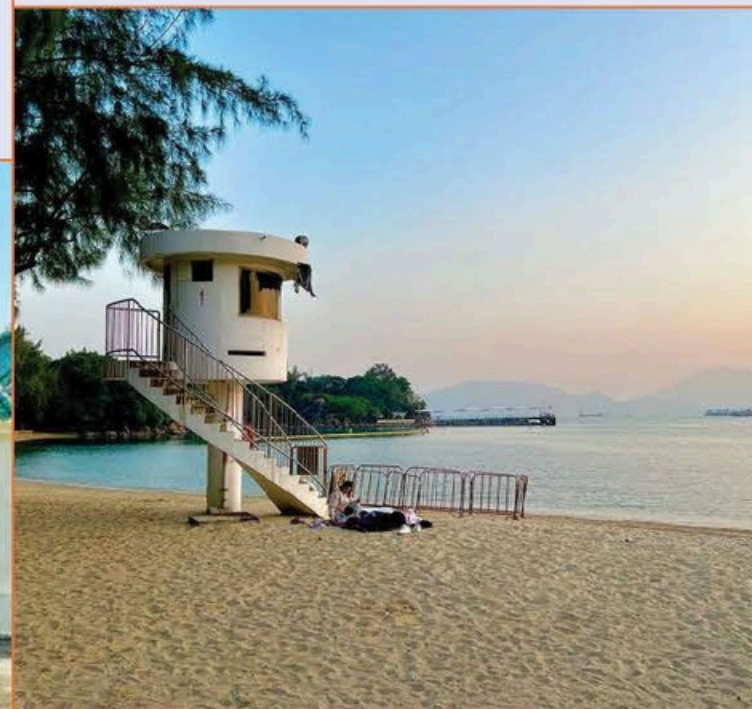
 **Tuen Mun Ferry Pier Stop**



1st Stop

Reptile House

 **Town Centre Stop**



5th Stop

Castle Peak Bay

 **Sam Shing Stop**

2nd Stop

School of Everyday Life

 **Siu Hong Stop**



假日限定旅遊專線
輕鐵發現號
LIGHT RAIL VOYAGER

• Tuen Mun Sightseeing Route •

假日限定旅遊專線
輕鐵發現號
LIGHT RAIL VOYAGER

• Yuen Long Sightseeing Route •

Merchant Offers

Upon presenting valid "Light Rail Travel Pass",
you can enjoy exclusive offers on its valid day.

Merchant	Offers	Light Rail Stops	Address
 HONG KONG HANG HEUNG	HK\$10 off upon spending HK\$50	 Tai Tong Road Stop	62, Castle Peak Road – Yuen Long, Yuen Long
Ho To Tai Dumplings & Wonton Noodles		 Hong Lok Road Stop	67 Yuen Long On Ning Road, Yuen Long
 Wing Shun		 Tai Tong Road Stop	Shop F, G/F, Koon Wong Mansion, 2-18 Tai Lee Street, Yuen Long
Shing Lee Beef Ball		 Tai Tong Road Stop	Shop 7, G/F, Cheung Fat Building, 20 Yu King Square, Yuen Long G/F, Kit Man House, Kuk Ting Street, Yuen Long
 Kun Van Kau		 Tai Tong Road Stop	Shop E, G/F, Yam On Lau, 32-34 Castle Peak Road – Yuen Long, Yuen Long
 Hok Kee Noodle		 Fung Nin Road Stop	Shop 1, Cooked Food Centre, Kik Yeung Road, Yuen Long
Yau Yik Dessert		 Fung Nin Road Stop	Shop 10, G/F, Campbell Building, 9 Kik Yeung Road, Yuen Long
 大棠有機生態園 TAI TONG ORGANIC ECOPARK		 Long Ping Station >  Take the MTR Bus K66, get off at Tai Tong Shan Road	Tai tong Organic Ecopark, Yuen Long
California		 Tai Tong Road Stop	G/F, 17 Kuk Ting Street, Yuen Long
 牛九天 【原裝牛九片】		 Tai Tong Road Stop	G/F, Tsui Wah House, 11 Tai Fung Street, Yuen Long
 PROTON — don't worry, be easy —		 Fung Nin Road Stop	G/F, 83 Kau Yuk Road, Yuen Long
Man Fong Cafe	HK\$20 off upon spending HK\$50	 Tai Tong Road Stop	Shop 4-5, G/F, Chi Fu Centre, 56 Yau San Street, Yuen Long

假日限定旅遊專線
輕鐵發現號
LIGHT RAIL VOYAGER

• **Tuen Mun Sightseeing Route** •

Merchant Offers

Upon presenting valid "Light Rail Travel Pass",
you can enjoy exclusive offers on on its valid day.

Merchant	Offers	Light Rail Stops	Address
 麻甩佬狗仔粉	\$5 off upon spending of \$50 up	 Choy Yee Bridge Stop / Lung Mun Stop	Lung Mun Oasis Midnight Food Street Shop: Shop 35, Block 2, Lung Mun Court, 43 Lung Mun Road, Tuen Mun Red Bridge Shop: Shop 10, G/F, Kam Men Mansion, 15 Tseng Choi Street, Tuen Mun
 Top Out Climbing	20% off for day pass	 Shan King (South) Stop	Shop LG126, Shan King Shopping Centre
 利東車仔麵	Get 1 free soy milk upon spending of \$50 up	 Shan King (South) Stop	Shop 125A-125B, LG/F, Shan King Shopping Centre
 Kung Fu Tea	15% off	 Shan King (South) Stop	Shop T-SK69, Shan King Shopping Centre
富記燒味	Enjoy one of the following offers: 1)Vita 250ml drinks: \$1 (Original price: \$5) 2)Roast Chicken Wing: \$5 (Original price: \$8) 3)Siu Mei with Rice: \$20 (Original price: \$26)	 Shan King (South) Stop	Shop 41-42, G/F, Shan King Market
日本駅和食	Get \$20 coupon upon spending of \$100 up	 Tuen Mun Ferry Pier Stop	Shop G7, Siu Hei Market, 201 Wu Chui Rd, Tuen Mun
二樓糖水舖	10% off upon spending of \$100 up	 Tuen Mun Ferry Pier Stop	Shop 14, Siu Hei Market, 201 Wu Chui Rd, Tuen Mun
 Lorway Coffee & Bakery	Get free snack upon spending of \$100 up	 Tuen Mun Swimming Pool Stop	B3-A, G/F, Tuen Mun Central Square, 22 Hoi Wing Road, Tuen Mun
 To Autumn	Lunch: 10% off upon spending of \$200[#] up per head Dinner: 10% off upon spending of \$300[#] up per head <small>[#]Service charge exclusive</small>	 Sam Shing Stop	Shop 26-27, G/F, Hong King Garden, 38 Tsing Sin Street, Tuen Mun
 Lei Tung Noodles	Get 1 free soy milk upon spending of \$50 up	 Town Centre Stop	Shop S-113, H.A.N.D.S, Tuen Mun Heung Sze Wui Road, Tuen Mun