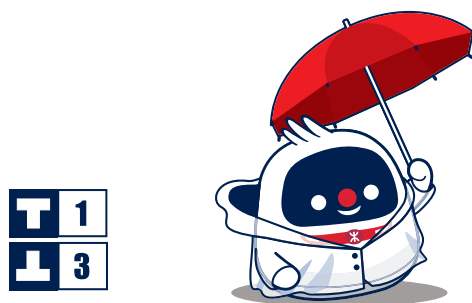


熱帶氣旋警告信號下的港鐵服務

熱帶氣旋警告信號下的鐵路及港鐵巴士服務

安全是港鐵運作的首要考慮，因此，當熱帶氣旋接近或已經影響本港，鐵路及港鐵巴士服務便可能需要調整。

此小冊子會概述不同級別的熱帶氣旋警告信號對港鐵服務及乘客帶來的影響。



1
3

一號戒備信號 三號強風信號

當香港天文台於港鐵正常服務時間內發出一號戒備信號或三號強風信號，鐵路及港鐵巴士服務將會維持正常。

警告信號生效期間，港鐵職員會在車站及露天路段為可能發出較高信號作準備。

即將改發八號烈風或暴風信號

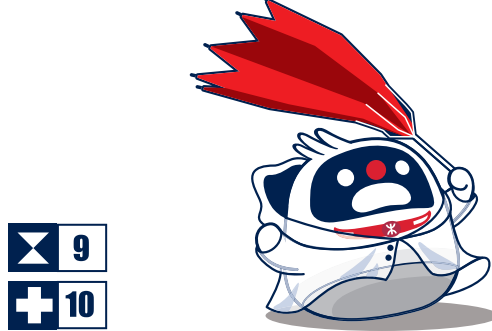
當香港天文台公佈稍後時間將改發八號烈風或暴風信號，鐵路及港鐵巴士服務將會維持正常，而服務班次會在有需要時逐步加密，以應付增加的乘客量。港鐵會增派職員檢查架空電纜及軌道，並備妥所需的應急設備。

8

八號烈風或暴風信號

信號發出初期，鐵路及港鐵巴士服務將會維持正常。港鐵亦會在有需要時加派額外人手，加密鐵路和港鐵巴士服務班次，以應付增加的乘客量。然而，隨著暴風接近本港，鐵路及港鐵巴士服務班次會逐步減少。此信號發出三小時後，港鐵巴士會停止服務。

港鐵會增派職員檢查架空電纜及軌道，並在有需要時和安全情況下，進行緊急維修。



9
10

九號烈風或暴風風力增強信號 十號颶風信號

所有露天段的鐵路服務將會暫停。

港鐵會盡力維持有限度的隧道段鐵路服務。然而為確保行車安全，服務班次將會較疏，行車時間亦會較長，並可能在未有通知的情況下於任何時間暫停服務。

港鐵會增派職員檢查架空電纜及軌道，並在有需要時和安全情況下，進行緊急維修。

如果所在地點安全，應繼續留在原處，以防強風隨時吹襲。若情況許可，車站會維持開放給受影響的乘客暫避。

九號烈風或暴風風力增強信號及十號颶風信號下港鐵服務一覽



九號烈風或暴風風力增強信號或十號颶風信號生效時，鐵路及港鐵巴士服務安排如下：

以下服務暫停

	機場快線	所有車站
	迪士尼線	所有車站
	輕鐵	所有輕鐵站
	港鐵巴士	所有路線

以下隧道段鐵路維持有限度服務*

(可能在未有預先通知的情況下於任何時間暫停服務)

	東鐵綫	紅磡 ↔ 金鐘
	港島綫	杏花邨 ↔ 堅尼地城
	觀塘綫	彩虹 ↔ 黃埔
	南港島綫	海怡半島 ↔ 利東
	將軍澳綫	所有車站
	荃灣綫	荔景 ↔ 中環
	屯馬綫	荃灣西 ↔ 尖東 何文田 ↔ 鑽石山
	東涌綫	九龍 ↔ 香港

*所有露天段鐵路服務暫停

改發較低信號後恢復服務的安排

十號颶風信號或九號烈風或暴風風力增強信號改為八號烈風或暴風信號

當香港天文台公佈稍後時間將由較高信號改為八號烈風或暴風信號，港鐵職員便會為全面恢復鐵路服務作準備。

然而，由於可能要清理路軌上的雜物，以及復修任何受損的鐵路設備，例如架空電纜，同時亦需要時間調配列車，露天段的鐵路服務或未能於八號烈風或暴風信號生效後即時恢復正常。港鐵會在安全情況下，儘快安排逐步提供露天段鐵路服務，但初時整體服務班次可能較疏。港鐵巴士則繼續暫停服務。

敬請乘客體諒並耐心等待。

八號烈風或暴風信號改為三號強風信號

當香港天文台公佈稍後時間將由較高信號改為三號強風信號，港鐵會加派人手，預備恢復港鐵巴士服務，以及在需要時加密鐵路服務班次，以應付增加的乘客量。

敬請乘客體諒並耐心等待。

注意事項

預留額外乘車時間！

熱帶氣旋警告發出時，車站或會實施客流管理措施，乘客須預留額外乘車時間。

當暴風接近本港，天文台發出八號烈風或暴風信號，乘客應儘早回家。

清晨及深夜 / 非服務時間發出熱帶氣旋警告信號

港鐵對應熱帶氣旋警告信號的級別，作出不同的服務承諾。若天文台於清晨或深夜港鐵乘客量較低期間，發出或改發八號、九號或十號熱帶氣旋警告信號，港鐵將根據該警告信號下的服務承諾，提供有限度服務。

若天文台於港鐵之非服務時間內，發出或改發八號、九號或十號熱帶氣旋警告信號，有關鐵路及港鐵巴士服務安排將於首班車開始服務前在港鐵網站及MTR Mobile手機應用程式公佈。

列車服務受阻

由於天氣情況可能會瞬間轉壞，而各區情況亦可能會顯著不同，尤其是空曠及偏遠地區，故此，港鐵必須先考慮行車安全，再儘量提供承諾之服務班次。

若天氣情況突然惡化，露天段的鐵路及港鐵巴士服務將會在未能預先通知的情況下即時暫停。

最新車務資訊

請留意車站、港鐵網站、MTR Mobile手機應用程式、電台及電視台的最新車務資訊。



港鐵網站
www.mtr.com.hk



MTR Mobile Traffic News



MTR Services under Tropical Cyclone Warning Signals

Rail and MTR Bus Services under Tropical Cyclone Warning Signals

As safety is the prerequisite of all MTR operations, Rail and MTR Bus services may be affected by Tropical Cyclones approaching or already impacting Hong Kong.

This leaflet gives an overview of how MTR services will be adjusted under each Tropical Cyclone Warning Signal and how this could have an impact on your travel.



Standby Signal 1 & Strong Wind Signal 3

When the Standby Signal 1 or Strong Wind Signal 3 is issued during normal traffic hours, Rail and MTR Bus services will remain normal.

With these signals in place, MTR staff will make preparations in stations and along open sections of the railway in case higher signals are issued.

Advance Notice of Gale or Storm Signal 8

When the Hong Kong Observatory announces that the Gale or Storm Signal 8 will be issued later, Rail and MTR Bus services will initially remain normal, with service frequencies being increased if necessary to meet passenger demand.

Additional staff will be deployed to monitor the overhead lines and track conditions. They will also prepare and check all emergency equipment.

8

Gale or Storm Signal 8

Rail and MTR Bus services will initially remain normal with MTR deploying additional staff to operate Rail and MTR Bus services at increased frequencies if passenger demand requires. However, the service frequencies will be reduced later as the storm gets closer. MTR Bus service will be suspended 3 hours after the issuing of Signal 8.

Additional staff will be deployed to check the overhead lines and track conditions and carry out any urgent repair work when it is safe to do so.



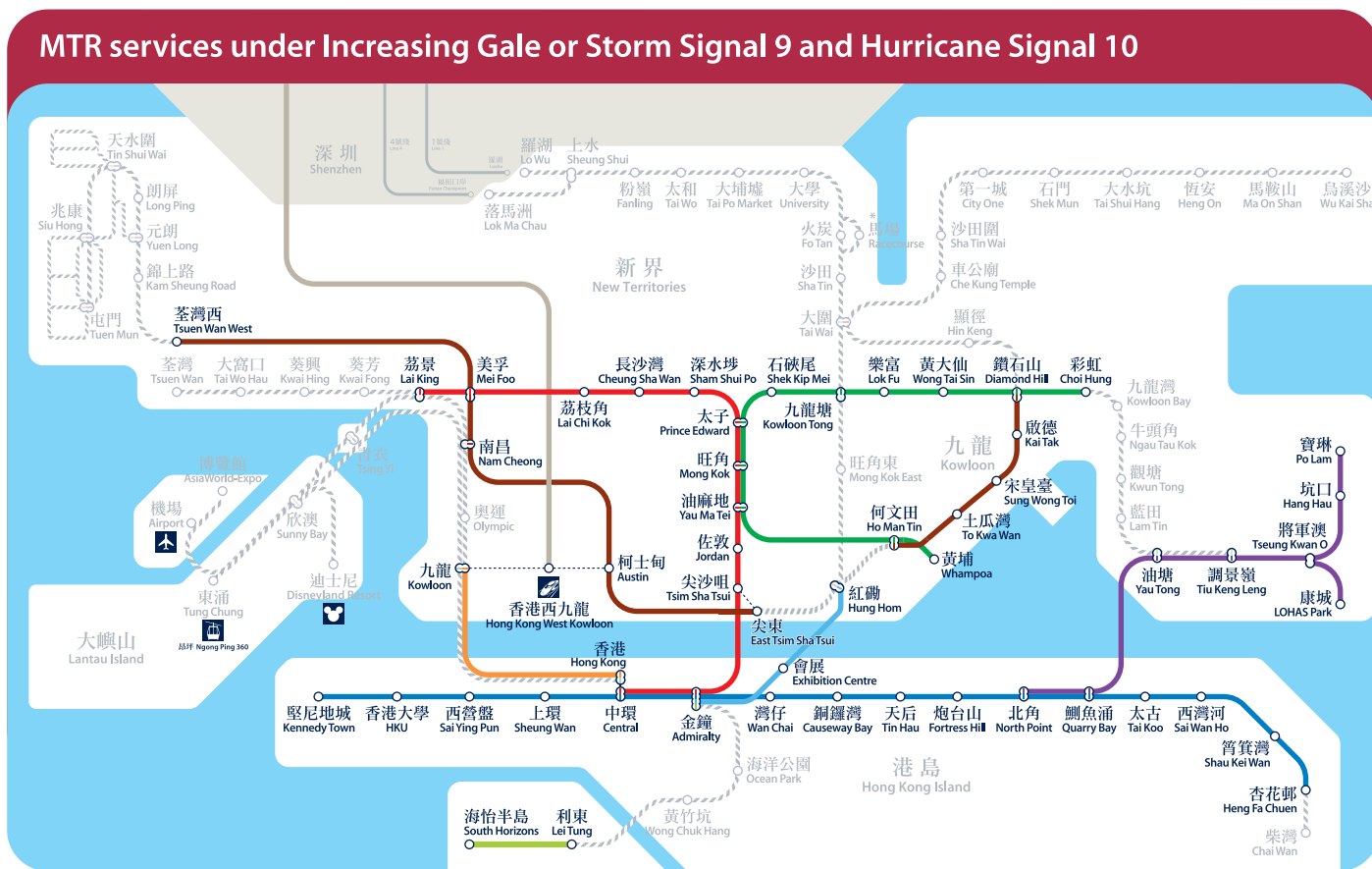
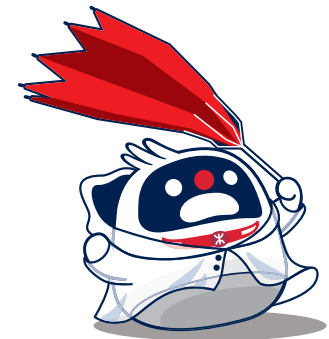
Increasing Gale or Storm Signal 9 & Hurricane Signal 10

There will be no service on open sections of the railway.

Whilst every effort will be made to maintain a limited service on the underground sections of the railway, the frequencies will be limited and travel time may be longer due to safety considerations. Rail service may stop at any time without notice.

Additional staff will be deployed to check the overhead lines and track conditions and carry out any urgent repair work when it is safe to do so.

You are advised to remain where you are if protected. Stations will remain open wherever possible to provide shelter for passengers for whom onward travel is disrupted.



Under the Increasing Gale or Storm Signal 9 or Hurricane Signal 10, MTR service arrangements will be as follows:

Service suspended

	Airport Express	All stations
	Disneyland Resort Line	All stations
	Light Rail	All stops
	MTR Bus	All routes

Limited service on the underground sections of these Lines*

(Service may stop at any time and without notice)

	East Rail Line	Hung Hom ↔ Admiralty
	Island Line	Heng Fa Chuen ↔ Kennedy Town
	Kwun Tong Line	Choi Hung ↔ Whampoa
	South Island Line	South Horizons ↔ Lei Tung
	Tseung Kwan O Line	All stations
	Tsuen Wan Line	Lai King ↔ Central
	Tuen Ma Line	Tsuen Wan West ↔ East Tsim Sha Tsui Ho Man Tin ↔ Diamond Hill
	Tung Chung Line	Kowloon ↔ Hong Kong

* There is no service on open sections of the railway

Lowering of Signals and Resumption of Service

Replacement of Hurricane Signal 10 or Increasing Gale or Storm Signal 9 with Gale or Storm Signal 8

As soon as the Hong Kong Observatory announces that higher signals will be replaced by the Gale or Storm Signal 8, MTR staff will be busy preparing for the full resumption of Rail service.

However normal service on open sections of the railway may not resume immediately upon the issuing of the Gale or Storm Signal 8 as MTR staff may have to clear debris from the tracks, repair any damaged equipment such as overhead lines, and get all trains to the required operating locations. Rail service will gradually be provided along open sections of the railway as long as it is safe to do so, but overall Rail service may initially operate to a limited frequency. The MTR Bus service will remain suspended.

Your patience and understanding is appreciated.

Replacement of Gale or Storm Signal 8 with Strong Wind Signal 3

When the Hong Kong Observatory announces that higher signals will be replaced by the Strong Wind Signal 3, MTR will deploy additional staff to prepare for MTR Bus service resumption and to operate normal Rail service at increased frequencies if passenger demand requires.

Your patience and understanding is appreciated.

Notes

Allow extra travelling time!

Passengers are advised to allow additional travel time when Tropical Cyclone Warning Signals are in place as Crowd Management Measures may be implemented in some stations.

When the Gale or Storm Signal 8 is issued as the storm gets closer, you are advised to return home as soon as possible.

Start and close of service / Non-traffic hours

Should Tropical Cyclone Warning Signal 8, 9 or 10 be issued or replaced in early morning or late evening when there is a lower passenger demand, MTR will provide a limited service based on the service commitment for the specific Tropical Cyclone Warning Signal issued.

If Tropical Cyclone Warning Signal 8, 9 or 10 is issued or replaced during non-service hours, updated information on Rail and MTR Bus services will be provided on the MTR website and MTR Mobile before the start of service.

Interruption to service

MTR will always try to provide the service promised, however safety must always be the prerequisite as the weather situation may change suddenly and conditions in different locations will vary considerably especially in exposed and remote areas.

Service on open sections of the railway and the MTR Bus service will be suspended immediately and without notice if the weather conditions suddenly deteriorate.

Updated information

Updated information will be provided in stations and through the MTR website, MTR Mobile, radio and TV broadcasts.



MTR website
www.mtr.com.hk



MTR Mobile Traffic News