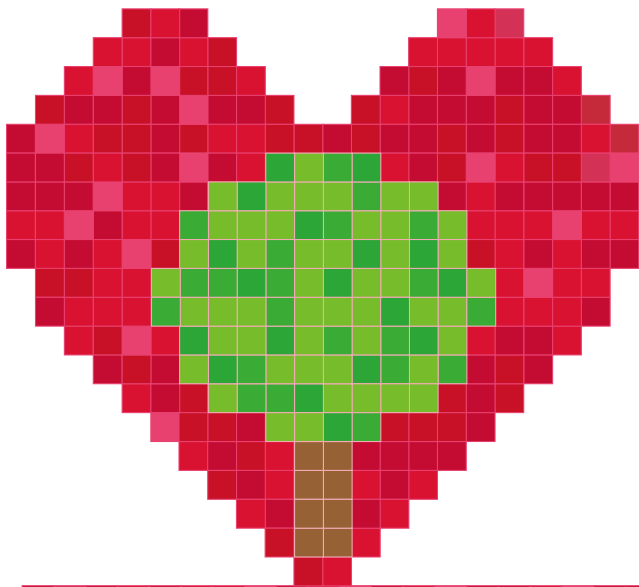
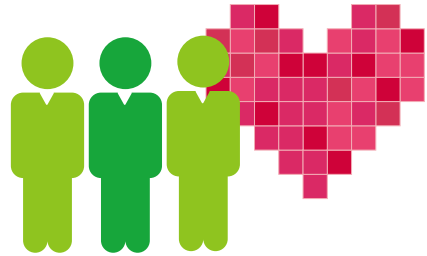


CARING



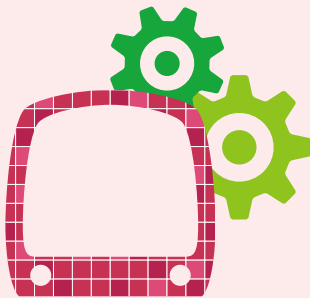
OUR PEOPLE



Fulfilling working environment for over

47,000
staff worldwide

OUR CUSTOMERS



93 New Trains and
40 Light Rail Vehicles



QR code
payment
for tickets
to be launched

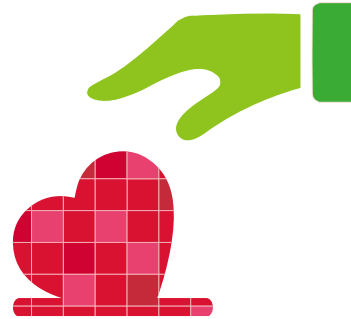


About **20,000**
Residential Units
and **3** **Shopping Malls**
Under Development

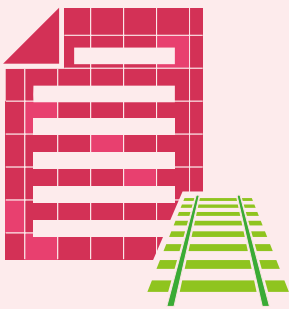
OUR COMMUNITY



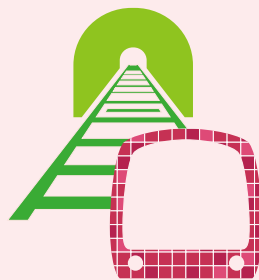
over **12,000**
young people joined youth
programmes including
STEM Challenge



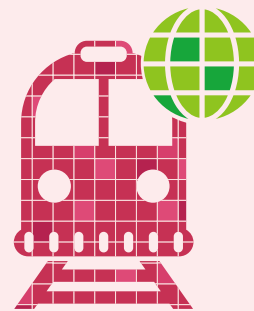
HK\$28 million
community investment



5 Railway
Project Proposals
Submitted



17-km
Shatin to Central
Link in progress



3 New Lines
outside of
Hong Kong
to open