

### **East Rail Line Section Between Fo Tan and Tai Po Market Stations Will Resume Operation Tomorrow**

Thanks to the MTR maintenance staff's efforts in emergency repairs, the section between Fo Tan and Tai Po Market stations on the East Rail Line (EAL), which has been closed in the past six days, will resume with limited train service tomorrow (18 November 2019). As the station facilities at University Station and the nearby trackside signalling equipment were seriously damaged and require a longer time to repair, all East Rail Line trains will not call at the station and will pass through the section at a restricted speed of 22 kph to ensure safety. Meanwhile, the service of Intercity Through Trains will remain suspended tomorrow.

In addition, the malicious damage and arson attacks on several EAL trains over the past few days have adversely impacted the overall carrying capacity of the EAL. Free shuttle bus service running between Tai Po Market and Kam Sheung Road stations will be arranged during morning and evening peak periods to relieve the pressure of EAL. The MTR Corporation will closely monitor the situation and implement crowd management measures. Additional staff will be deployed to maintain order at the stations as well. Passengers using the EAL are advised to start their journey earlier and pay close attention to the latest information on the service arrangements provided by the Corporation via the MTR website, MTR Mobile app, station and in-train announcements as well as the media.

Over the past week, a number of locations along the open section of the EAL were attacked by rioters. They hurled objects and petrol bombs from height which posed severe threats to the safety of passengers, MTR staff and railway facilities. Among the affected locations, the facilities and trackside signalling equipment at University Station were severely damaged. Furthermore, rioters broke into a train which was forced to halt at the station and set fires in the compartments several times since last Tuesday. To ensure the safety of our passengers, MTR staff and railway operations, we had no choice but to suspend the railway service between Fo Tan and Tai Po Market stations. The station staff also needed to retreat from the station.

After the situation near University Station has stabilised, the Corporation was able to send maintenance personnel to the station yesterday (November 16) to conduct a detailed assessment of the damages, to plan how to carry out the restoration work and remove the damaged train. Our engineering colleagues also carefully checked the condition of the section between Fo Tan Station and Tai Po Market Station to ensure that it is safe before deciding to resume train operations tomorrow.

- more -

The incidents over the past several days have adversely affected residents in the northern New Territories. We appeal to the parties concerned to stop vandalism at railway facilities and not to throw objects at the railway facilities and operating trains. If we see any threat to the safety of our passengers, MTR staff and railway operations, we will have to suspend the service at the affected stations or sections of railway lines, which may cause further inconvenience to passengers.

- End -

#### About MTR Corporation

Every day, MTR connects people and communities. As a recognised world-class operator of sustainable rail transport services, we are a leader in safety, reliability, customer service and efficiency.

MTR has extensive end-to-end railway expertise with more than 40 years of railway projects experience from design to planning and construction through to commissioning, maintenance and operations. Going beyond railway delivery and operation, MTR also creates and manages dynamic communities around its network through seamless integration of rail, commercial and property development.

With more than 40,000 dedicated staff\*, MTR carries over 12 million passenger journeys worldwide every weekday in Hong Kong, the United Kingdom, Sweden, Australia and the Mainland of China. MTR strives to grow and connect communities for a better future.

For more information about MTR Corporation, please visit [www.mtr.com.hk](http://www.mtr.com.hk).

\*includes our subsidiaries and associates in Hong Kong and worldwide

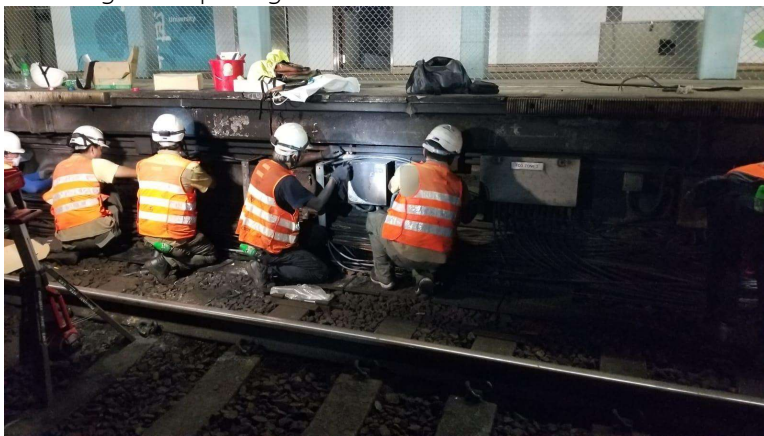
Photo caption:

1. Thanks to the MTR maintenance staff's efforts in emergency repairs, the section between Fo Tan and Tai Po Market stations on the East Rail Line (EAL), which has been closed over the past six days, will resume a limited train service tomorrow (18 November 2019).

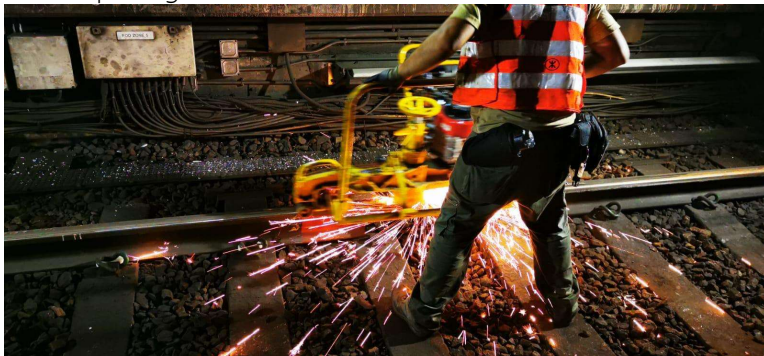
Clearance of objects from the tracks:



Checking and repairing cables :



Track repairing:





Connecting cables:

