

**The Sixth Sunday Closure between  
Mong Kok East and Hung Hom Stations on the East Rail Line  
Scheduled for 4 July**

To facilitate critical bifurcation works for the cross-harbour section of the East Rail Line (“EAL”), the sixth Sunday closure of the section between Mong Kok East and Hung Hom stations on the EAL has been scheduled for 4 July 2021 (Sunday). Passengers are recommended to plan their journeys in advance and take alternative MTR routes or transportation.

To connect the existing EAL to the newly constructed railway section and platforms of Hung Hom Station, bifurcation works are being carried out at the section between Mong Kok East and Hung Hom stations. The works involve track re-configuration for connection to the new section, installation of overhead lines as well as modification of part of the equipment of the existing signalling system. With the efforts of MTR colleagues since bifurcation works commenced in January 2021, the track connection work of the main running lines to newly constructed platforms of Hung Hom Station has been completed while installation of the overhead lines has also been carried out as scheduled.

We encourage passengers to plan their journeys on 4 July with MTR Mobile and make use of other MTR routes. The service commencement of the full Tuen Ma Line provides alternative routes to passengers. For instance, it takes around 31 minutes for a passenger to travel from University to Hung Hom stations by interchanging to the Tuen Ma Line (TML) at Tai Wai Station on the EAL, which is much faster than the estimated 76 minutes for using the free MTR shuttle bus. (Please refer to the annex for details)

During the service suspension, the Corporation will provide free shuttle buses to run between Hung Hom and Kowloon Tong stations. Passengers are reminded that as the capacity of shuttle buses is limited and the operational efficiency may be affected due to unpredictable road traffic conditions, the journey time could be longer than the time under normal circumstances.

A special fare arrangement will be in place on that day, and passengers who encounter any fare issues can approach the Customer Service Centres at MTR stations for assistance. Additional staff will be deployed at relevant stations to help passengers in need. The Corporation will also monitor the situation closely and take appropriate operations adjustments and measures to facilitate passengers’ travels.

The Corporation would like to thank passengers again for their understanding and cooperation during the previous closures.

- End -

## About MTR Corporation

Every day, MTR connects people and communities. As a recognised world-class operator of sustainable rail transport services, we are a leader in safety, reliability, customer service and efficiency.

MTR has extensive end-to-end railway expertise with more than 40 years of railway projects experience from design to planning and construction through to commissioning, maintenance and operations. Going beyond railway delivery and operation, MTR also creates and manages dynamic communities around its network through seamless integration of rail, commercial and property development.

With more than 40,000 dedicated staff\*, MTR carries over 13 million passenger journeys worldwide every weekday in Hong Kong, the United Kingdom, Sweden, Australia and the Mainland of China. MTR strives to grow and connect communities for a better future.

For more information about MTR Corporation, please visit [www.mtr.com.hk](http://www.mtr.com.hk).

\*includes our subsidiaries and associates in Hong Kong and worldwide

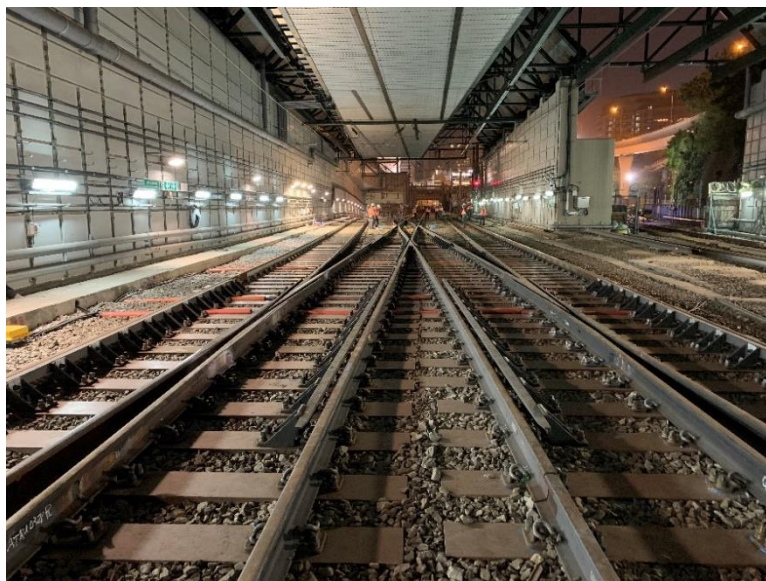
Photo captions:

1. The bifurcation works of the EAL cross-harbour section involve track re-configuration for connection to the new section.

**Track connection works**



Before the works



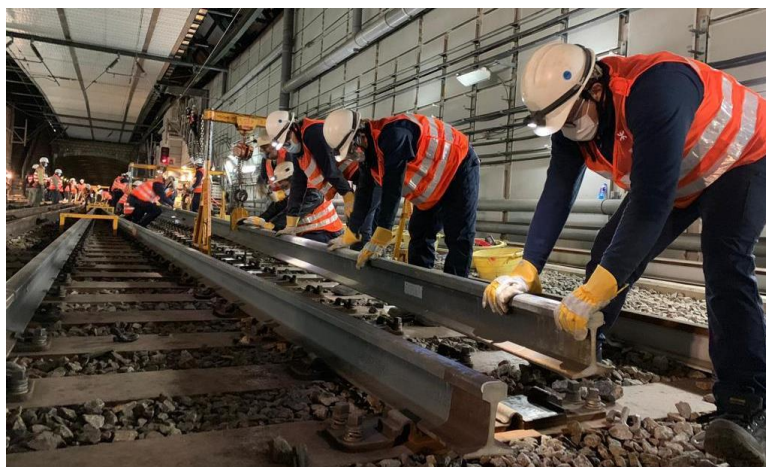
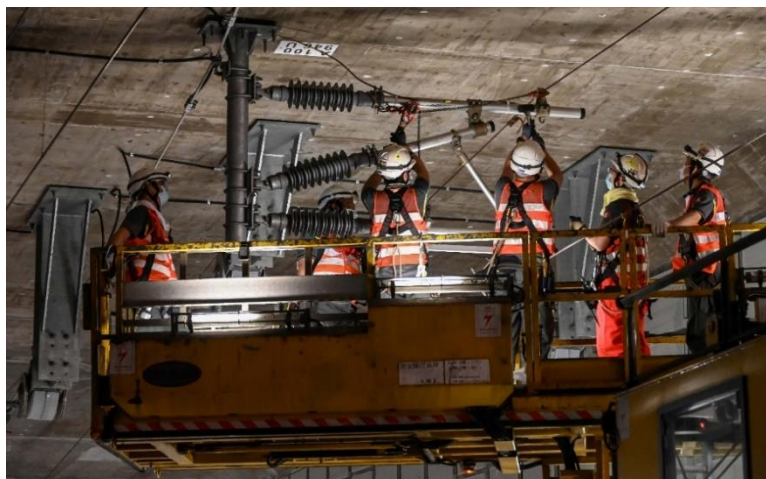
At the current stage



## Installation of the overhead lines



2. With the efforts of MTR colleagues, the works of the EAL cross-harbour section have been carried out as scheduled.





## Annex

1. During the service suspension between Mong Kok East and Hung Hom stations, passengers are advised to take alternative routes via the Tuen Ma Line or other railway routes.

### Example 1: From University to Hung Hom stations

替代鐵路線 - 東鐵綫、屯馬綫  
Alternative railway routes: East Rail Line, Tuen Ma Line

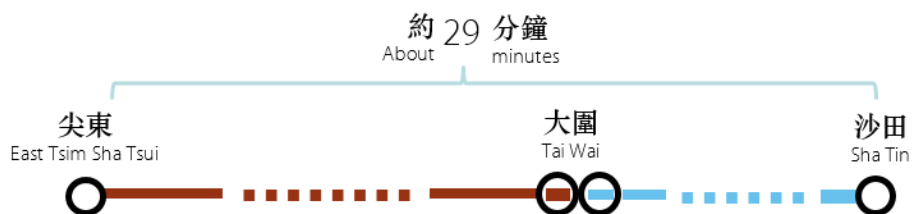


東鐵綫、免費接駁巴士  
East Rail Line and free MTR shuttle bus



### Example 2: From East Tsim Sha Tsui to Sha Tin stations

替代鐵路線 - 屯馬綫及東鐵綫  
Alternative railway routes: Tuen Ma Line and East Rail Line



屯馬綫、免費接駁巴士及東鐵綫  
Tuen Ma Line, free MTR shuttle bus and East Rail Line



### Example 3: From Kowloon Tong to Hung Hom stations

替代鐵路線 – 觀塘綫、屯馬綫  
Alternative railway routes: Kwun Tong Line, Tuen Ma Line



免費接駁巴士  
Free MTR shuttle bus



- Prominent signage will be posted on the East Rail Line trains and at affected stations to remind passengers of the temporary service suspension between Mong Kok East and Hung Hom stations on the East Rail Line on 4 July 2021 (Sunday).

**紅磡至旺角東站列車服務暫停**  
No train service between Hung Hom and Mong Kok East stations

**7月4日 (星期日)**  
**4/7/2021 (Sunday)**

**旺角東**  
Mong Kok East

**紅磡**  
Hung Hom

**其他乘車資料 Alternative transport**

**屯馬綫及其他綫路**  
Tuen Ma Line and other Lines

**港鐵免費接駁巴士服務**  
Free MTR shuttle bus service

**九龍總站** 旺角東站  
05:45 - 01:16

**紅磡站** 旺角東站  
05:30 - 00:38

**其他公共交通工具**  
Other public transport

**MTR Mobile**  
行程指南 Trip Planner

**繼續為你做好-多謝體諒**  
We are striving to improve - thank you for your understanding

**旺角東**  
Mong Kok East

**紅磡**  
Hung Hom

**紅磡至旺角東站列車服務暫停**  
No train service between Hung Hom and Mong Kok East stations

**7月4日 (星期日)** | **4/7/2021 (Sunday)**

**MTR Mobile**  
行程指南 Trip Planner

**繼續為你做好-多謝體諒**  
We are striving to improve - thank you for your understanding