

PR049/21
13 July 2021

Local Culture and Heritage in Embroidered Artworks at Latest “Art in MTR” Gallery in Central Station

In the modern world where images and graphics are rapidly and digitally created, the latest “Art in MTR” exhibition showcasing exquisite and detailed hand-embroidered artworks may seem like a breath of fresh air. The exhibition, entitled “Stitches in time...”, is now on display at MTR Central Station’s Exit/Entrance J from today (13 July 2021) to 10 September 2021 featuring items as diverse as Hong Kong scenery, local culture and heritage and plants and animals created by a group of stitching enthusiasts from different ages and communities.

The embroideries are presented by textile artist Ms Nikki Delpont-Wepener and her students who want to arouse people’s interest in stitching through their nearly 200 hand-embroidered artworks. “My students and I have prepared a feast of inspirational embroidery showcasing numerous two-dimensional and three-dimensional mixed media techniques and stitches for passengers to appreciate the beauty of stitching,” said Nikki who has been doing embroidery since she was around six years old.

“Stitching is more than a creation but a media to deliver care and love, such as supporting local charity events by making practical items like hats, lunch bags and quilts for people in need. Besides appreciating the designs, I hope passengers can also feel the joy and warmth expressed through the stitching,” Nikki added.

“Stitching and hand embroidery require a delicate touch and meticulous attitude. Passengers will be amazed by the details and creativity of each embroidered artwork. We hope to enrich their minds as well as inspire them in their daily lives with different formats of art exhibitions with stitching as one of the great examples,” said Ms Linda Choy, Corporate Affairs and Branding Director of MTR Corporation.

“Stitches in time...” is the latest exhibition for the “Art in MTR” programme under the Corporation’s “Community Connect” initiative. MTR Corporation strives to integrate art into stations by offering space at different MTR stations for art exhibitions to promote artistic talent and the public’s art appreciation.

- End-

About MTR Corporation

Every day, MTR connects people and communities. As a recognised world-class operator of sustainable rail transport services, we are a leader in safety, reliability, customer service and efficiency.

MTR has extensive end-to-end railway expertise with more than 40 years of railway projects experience from design to planning and construction through to commissioning, maintenance and operations. Going beyond railway delivery and operation, MTR also creates and manages dynamic communities around its network through seamless integration of rail, commercial and property development.

With more than 40,000 dedicated staff*, MTR carries over 13 million passenger journeys worldwide every weekday in Hong Kong, the United Kingdom, Sweden, Australia and the Mainland of China. MTR strives to grow and connect communities for a better future.

For more information about MTR Corporation, please visit www.mtr.com.hk.

*includes our subsidiaries and associates in Hong Kong and worldwide

About "Community Connect"

"Community Connect" is the Corporation's platform for initiatives that aims to support everyone from the young to the old while enhancing the liveability of our city. What all the programmes have in common is that they've been carefully developed to nurture the communities we serve, so that together we can grow and thrive in a sustainable Hong Kong. Specifically,

- We invest in young people as they are our customers, future leaders, innovators, and game changers – supporting their development is an investment in our communities' futures.
- We contribute to making cities more connected and vibrant through staff volunteering, and collaborating with NGOs and social enterprises to address evolving community needs.
- We enhance the travelling experience through integrating art into our station architecture and facilitating artists to stage their art-related activities or displays in our stations and malls.

Photo Captions:

1. Nearly 200 hand-embroidered stitching artworks with various themes are now on display at Exit/Entrance J of Central Station from 13 July to 10 September 2021.



2. Ms Nikki Delport-Wepener (first left) and her students are thrilled to have their embroidered artworks displayed at the "Art in MTR" gallery in Central Station to promote stitching and hand embroidery to more people.



3. Embroidered artworks created by Nikki and her students delicately illustrate the scenery, heritage and culture in Hong Kong.



“Stitches in time...”

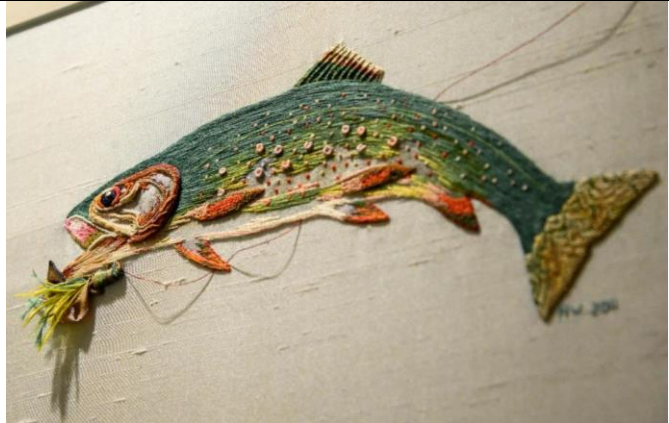
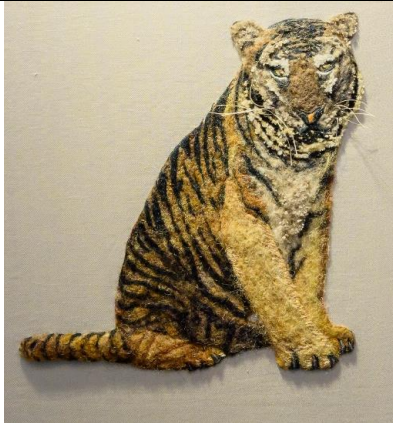
Date: 13 July - 10 September 2021

Venue: “Art in MTR” gallery at MTR Central Station Exit/Entrance J

Free admission

Other Embroidered Artworks

Animals



Plants



Clothes



Household items



Landscapes

