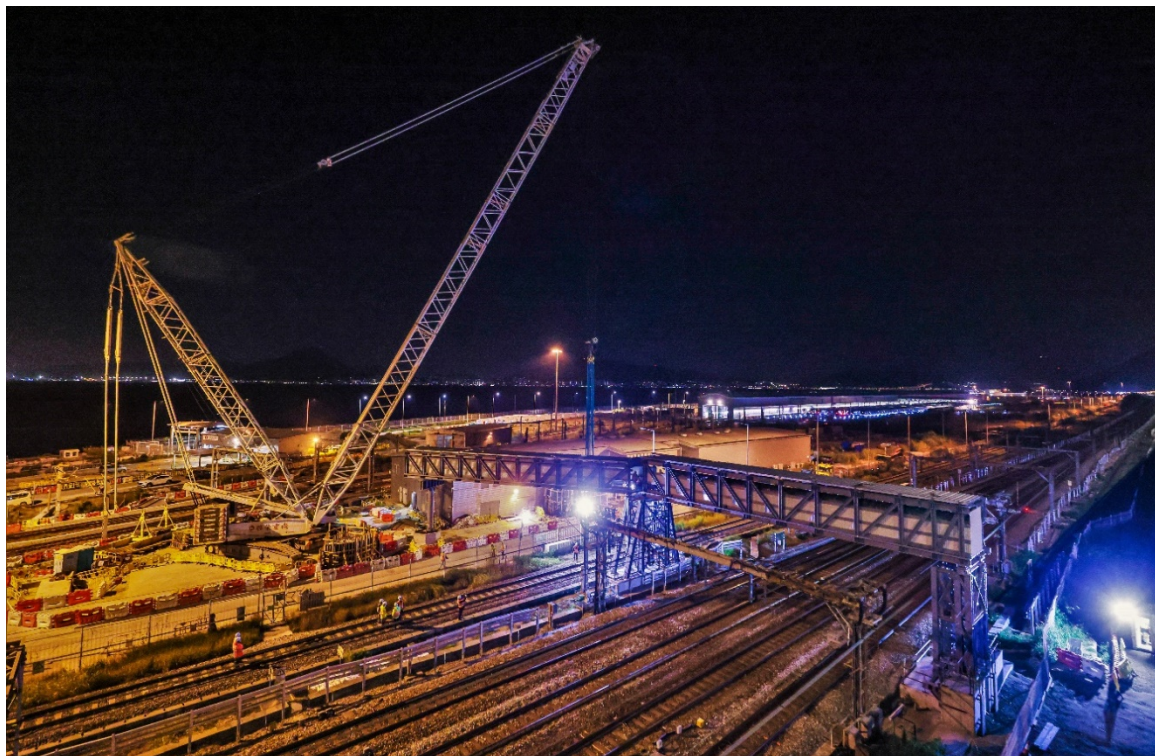


新聞稿

Press Release

PR082/22
30 December 2022

Advance Works for MTR's Oyster Bay Project in Full Action with First Cable Bridge Installed



MTR Corporation is actively preparing the construction works of the Oyster Bay project, and the advance works for the project have already commenced. One of the early tasks is to erect two cable bridges spanning across the live tracks of the Tung Chung Line and Airport Express Line. The tasks are extremely challenging because the complex lifting and installation works had to be completed within the very limited non-traffic hours, while railway service safety also had to be assured throughout and after the works. Through the hard work of the professional teams, the two trusses of the first cable bridge, weighing more than 130 tons with a length of over 45 metres, were successfully installed over two nights in December during non-traffic hours.

-more-



Through the two cable bridges, underground cables and utilities will be diverted and re-routed from near the Siu Ho Wan Depot to the other side of the Tung Chung Line and Airport Express Line tracks, allowing for subsequent development works atop the depot. The lifting and installation of the second cable bridge will be completed in January next year.



To ensure the safe and smooth completion of the heavy lifting and installation works within the very limited non-traffic hours, the engineering team prudently and carefully planned each step of the works, which was then thoroughly simulated and trialled with the contractor before the works were actually carried out.

The Oyster Bay project involves the conversion of the depot with a podium deck and property enabling works for topside property development. A new station, Oyster Bay Station, will also be constructed to serve the future population growth.

-End-

About MTR Corporation

To Keep Cities Moving, MTR makes encounters happen and rendezvous for a more connected tomorrow. As a recognised world-class operator of sustainable rail transport services, we are a leader in safety, reliability, customer service and efficiency.

MTR has extensive end-to-end railway expertise with more than 40 years of railway projects experience from design to planning and construction through to commissioning, maintenance and operations. Going beyond railway delivery and operation, MTR also creates and manages dynamic communities around its network through seamless integration of rail, commercial and property development.

With more than 40,000 dedicated staff*, MTR carries over 13 million passenger journeys worldwide every weekday in Hong Kong, the United Kingdom, Sweden, Australia and Mainland China. Together, we Go Smart and Go Beyond.

For more information about MTR Corporation, please visit www.mtr.com.hk

*includes our subsidiaries, associates and joint ventures in Hong Kong and worldwide