

新聞稿

Press Release

PR038/25
11 June 2025

MTR Integrated Smart Project Management Enhances Quality and Efficiency of New Railway Projects Kwu Tung Station on East Rail Line under Northern Link Project to be Topped Out This Year

The MTR Corporation is taking forward multiple new railway projects while most projects are entering construction peak with structural works being carried out in full swing. Kwu Tung Station on the East Rail Line* as a part of the Northern Link project is set to be topped out in the fourth quarter of this year with target construction completion maintained in 2027, making it the earliest station to be commissioned in this wave of new railway projects.

Mr Carl Devlin, Capital Works Director of the MTR Corporation, provided progress updates on the new railway projects to the media today (11 June 2025). He said: “Over the past year, multiple new railway projects have completed their respective critical works as planned, laying a solid foundation for the peak construction phase starting from this year. We are now fully engaged in large-scale structural works.”

The construction of Kwu Tung Station, located between Sheung Shui and Lok Ma Chau stations on the East Rail Line and serving as a key interchange station for the Northern Link, is progressing smoothly in accordance with plans, with works on station structure in full swing and glass panels for platform screen doors now being installed. For the Tung Chung Line Extension’s East Section, the new track towards Hong Kong Island has been fully laid, with trackside equipment installation currently underway. Meanwhile, the main structure of Tung Chung East Station* is now visibly taking shape. In the West Section, the Tung Chung West-bound new railway tunnel is expected to be completed within this year. Concurrently, foundation works for the Tuen Mun South Extension viaduct have commenced, with superstructure construction set to begin progressively by year-end. (Please refer to Appendix for the latest project updates.)

The majority of new railway projects involve construction works on operating railway lines and densely populated communities. The team has to make good use of the non-traffic hours after train services end every night and some non-peak hours to advance work progress. The Corporation remains committed to meticulous planning and stringent project management, utilizing innovative technologies to enhance efficiency and maintaining continuous engagement with local stakeholders to proceed works safely and systematically.

-more-

Making extensive use of digitalisation to enhance efficiency and construction management, the Corporation has established “Digital Delivery Centres” (DDCs) to ensure respective projects are delivered safely and systematically.

Mr Carl Devlin said, “We place great emphasis on the integrated application of innovative technology. Our DDCs for the railway projects employ diverse digital technologies and systems to provide integrated management and monitoring throughout all project phases. The DDCs have proven instrumental in enhancing construction management, work efficiency, and safety performance across our projects.”

Currently, MTR has set up two DDCs to oversee the railway projects by region. Engineering personnel can utilise various digital tools, including a “Common Data Environment” with Building Information Modelling (BIM) to consolidate Architectural, Civil and Electrical and Mechanical (E&M) information from design to construction throughout the whole project life cycle. Different teams can share and analyse information in real-time, facilitating joint and advanced planning of work procedures, improving communication and coordination efficiency to ensure construction quality. Additionally, the “Smart Site Management Platform”, equipped with cameras across various site locations, allows remote real-time monitoring of construction progress. Workers’ smart wearables with IoT connectivity further enhance workers’ safety and enable dynamic manpower allocation, enhancing efficiency and flexibility.

Note:

*Station names are working titles only

-End-

About MTR Corporation

To Keep Cities Moving, MTR makes encounters happen and rendezvous for a more connected tomorrow. As a recognised world-class operator of sustainable rail transport services, we are a leader in safety, reliability, customer service and efficiency.

MTR has extensive end-to-end railway expertise with over 45 years of railway projects experience from design to planning and construction through to commissioning, maintenance and operations. Going beyond railway delivery and operation, MTR also creates and manages dynamic communities around its network through seamless integration of rail, commercial and property development.

With more than 50,000 dedicated staff*, MTR carries over 10 million passenger journeys worldwide every weekday in Hong Kong and beyond. Together, we Go Smart and Go Beyond.

For more information about MTR Corporation, please visit www.mtr.com.hk.

*includes our subsidiaries, associates and joint ventures in Hong Kong and worldwide

Photo Caption:

1. Mr Carl Devlin, Capital Works Director of the MTR Corporation, provided updates on the progress of the new railway projects, including the application of innovative technology. With construction works of various projects entering the peak starting from 2025, Kwu Tung Station is set to be topped out in the fourth quarter of this year.

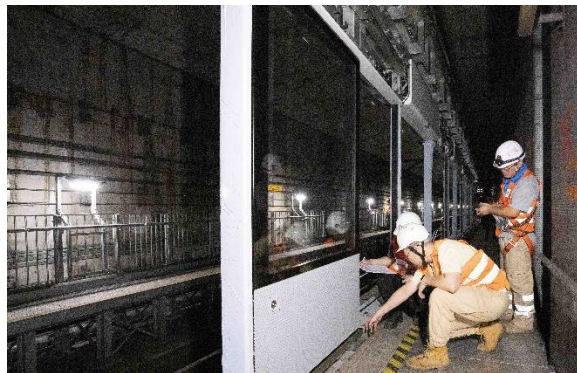
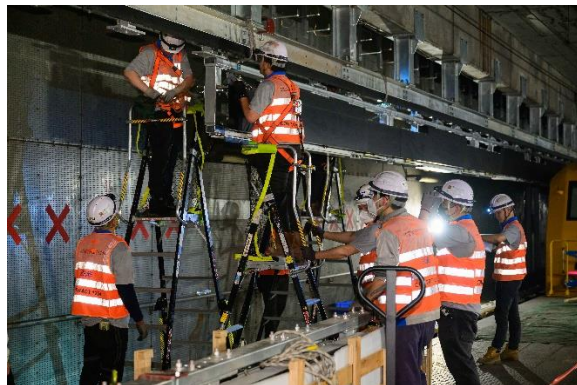


2. The MTR Corporation has set up "Digital Delivery Centres" of new railway projects to provide integrated management and monitoring throughout all project phases to enhance project management and work efficiency.



Appendix

Progress updates of new railway projects in 2025



Northern Link

Kwu Tung Station on the East Rail Line*

- Station construction is progressing at full speed, with the ground floor slab about to be completed. Construction of staircases and entrances to commence.
- At the platform-level, glass panels for platform screen doors are installing. Track-side equipment will be installed progressively.

Northern Link Main Line

- Preparation works are being carried out progressively.



Tung Chung Line Extension

Tung Chung East Section – Tung Chung East Station* and Major Track Diversion Works

- Main station structural works are ongoing, including the construction of two bridges to connect the station entrances.
- Two turnouts for Hong Kong-bound tracks have been installed and new tracks laid. Track-side equipment installation is underway using engineering vehicles.

Tung Chung West Section – Tung Chung West Station* and Tunnel Boring Works

- Station construction takes a top-down approach with roof slab under construction.
- Tunnel boring commenced in early 2025, with construction of the Tung Chung West-bound tunnel to be completed within this year.



Tuen Mun South Extension

Railway Viaduct Construction Works

- Foundation and pier construction for the viaduct extension along Tuen Mun River is ongoing.
- Superstructure construction is scheduled to begin by year-end.

Station Construction Works

- Following the relocation of existing community facilities to vacate space for new station construction, foundation works for A16 Station* and Tuen Mun South Station* are now underway.



Oyster Bay Station

- Concurrent modification of the depot and station construction is in progress, with station foundation works ongoing.



Hung Shui Kiu Station on the Tuen Ma Line*

- Parapet wall removal and overhead line transformation on the viaduct have been completed without disrupting Tuen Ma Line services.
- Ground investigation works will commence soon to prepare for station foundation works.

Note: *Station names are working titles only