

新聞稿

Press Release

PR043/26
22 June 2026

Tung Chung Line Extension Reaches Another New Milestone TBM “Xihe” Completes Tunnelling for Both Directions for Tung Chung West Section

MTR Corporation is taking the Tung Chung Line Extension project forward in full swing. One of the key features of the Tung Chung West section is the use of a tunnel boring machine (TBM) to construct the tunnels extending from the existing Tung Chung Station to the future Tung Chung West Station[#]. The Corporation announced today (22 June 2026) that the TBM “Xihe” has completed its mission after successfully breaking through the two tunnels in both directions. This marks a new milestone for the West section, as the project now moves into the track-laying and electrical & mechanical installation phase.

The use of TBM “Xihe”, with a diameter of approximately 7.3 metres and weighing about 1,000 tons, to excavate the tunnels effectively minimised impact on the community. The machine also installed precast tunnel lining segments simultaneously during excavation, significantly enhancing construction efficiency and safety. “Xihe” was launched in early 2025 and completed the tunnel towards Tung Chung West Station in October that year. Subsequently, the MTR team overcame space constraints at the Tung Chung West Station worksite by carrying out MTR’s first-ever in-place TBM U-turn operation. This innovative approach reduced the need for large-scale lifting and ground transportation before commencing excavation of the tunnel back towards Tung Chung Station.

Ms Jeny Yeung, Chief Executive Officer of MTR Corporation, together with Mr Liu Chun-san, Under Secretary for Transport and Logistics, Mr Carl Devlin, Capital Works Director of MTR Corporation, Mr Eddie Leung, Principal Government Engineer/Railway Development of Highways Department, as well as representatives from relevant government departments, the MTR project team and contractors, attended the ceremony today to witness this significant tunnel breakthrough moment.

-more-

"MTR is committed to building a community railway using a community-friendly approach. 'Xihe' has overcome complex and variable geological conditions, boring through mountains and beneath the sea to establish the underground railway corridor for the Tung Chung West section. This breakthrough fully demonstrates the professionalism and strong collaboration of the project team. It would not have been possible without the understanding and support of the local community. 'Xihe' is the goddess of the sun in Chinese mythology, symbolising guidance and light, bestowing blessings for the smooth completion of tunnel construction works under her guidance. In fact, the name 'Xihe' was chosen through a community naming competition with over 400 nominations, carrying a special meaning of community participation. We will continue to work closely with the community to advance the Tung Chung Line Extension project, with the target of completion in 2029. Upon operation, it will further enhance the transport network and connectivity in North Lantau," said Ms Jeny Yeung, Chief Executive Officer at the ceremony.

While the West section tunnelling has reached this milestone, other works for the Tung Chung Line Extension project are also progressing in an orderly manner. Major track diversion works at the Tung Chung East section are actively underway. The Hong Kong-bound track is expected to be diverted in the third quarter of this year, allowing trains to operate on the new track section. Subsequently, a section of the existing tracks will be removed to make way for the Tung Chung-bound track diversion works, including the remaining two critical turnout installations to be carried out later this year and next year.

-End-

#The station name is a working title only.

About MTR Corporation

To Keep Cities Moving, MTR makes encounters happen and rendezvous for a more connected tomorrow. As a recognised world-class operator of sustainable rail transport services, we are a leader in safety, reliability, customer service and efficiency.

MTR has extensive end-to-end railway expertise with over 45 years of railway projects experience from design to planning and construction through to commissioning, maintenance and operations. Going beyond railway delivery and operation, MTR also creates and manages dynamic communities around its network through seamless integration of rail, commercial and property development.

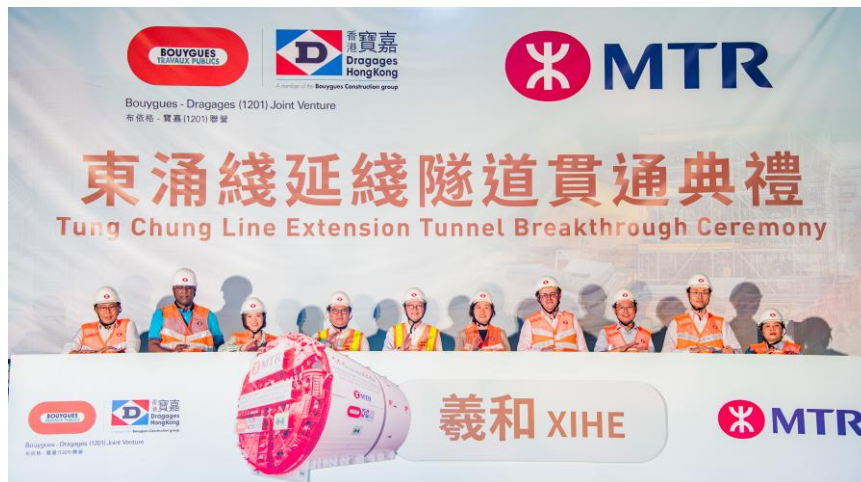
With more than 46,000 dedicated staff*, MTR carries over 13 million passenger journeys worldwide every weekday in Hong Kong, Chinese Mainland and beyond. Together, we Go Smart and Go Beyond.

For more information about MTR Corporation, please visit www.mtr.com.hk.

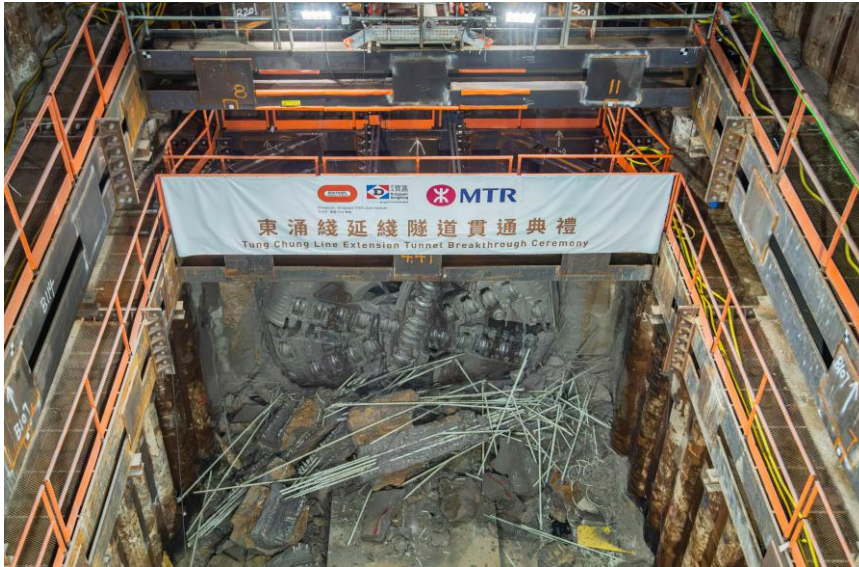
*includes our subsidiaries, associates and joint ventures in Hong Kong and worldwide

Photo Caption:

1. Ms Jeny Yeung, Chief Executive Officer of MTR Corporation (5th right), Mr Carl Devlin, Capital Works Director of MTR Corporation (4th right), together with Mr Liu Chun-san, Under Secretary for Transport and Logistics (5th left) and Mr Eddie Leung, Principal Government Engineer/Railway Development of Highways Department (4th left), Mr Rohan Perinpanayagam, General Manager-Lantau & NT South Portfolio of MTR Corporation (2nd left), Mr Chan Hok-fung, Legislative Council member (3rd right), Ms Chan Ka-pui, Legislative Council member (3rd left), Mr Mok Mong-chan, District Officer of Island District Office (2nd right), Ms Wong Chau-ping, Chairlady of the Tung Chung Rural Committee (1st right), and Mr Patrick Lu, Managing Director of Dragages Hong Kong (1st left), witness the significant moment of the tunnel breakthrough for the Tung Chung West section with the project team.



2. Tunnel boring machine “Xihe” has successfully broken through the tunnels in both directions between the existing Tung Chung Station and the future Tung Chung West Station, marking the completion of major tunneling works for the West section.



3. Major track diversion works along the Tung Chung East section are progressing in an orderly manner, with the Hong Kong-bound track expected to be diverted in the third quarter of this year when trains will officially operate on the new track section.

