

PRESS STATEMENT

14 October 2019

MTR Strongly Condemns Repeated Vandalism of Railway Facilities Resulting in Suspension of Light Rail Service and other rail services

Facilities at a large number of MTR stations and Light Rail (LR) stops were vandalised by radical protesters again during public activities yesterday (13 October 2019). As LR trackside equipment was interfered with and vandalised, affecting safe operations, the Corporation had to suspend the whole LR network early. MTR strongly condemns the irresponsible and unlawful acts and has reported the incidents to the Police.

LR Routes 705, 706, 751 and 761P running in Tin Shui Wai District were first suspended at around 3:05pm as sundry objects were thrown onto the LR tracks affecting the safety of LR operations, and road conditions were also affected by the public activities. Later on, LR signalling system equipment at the junction of Pui To Road and Ming Kum Road was maliciously vandalised. Moreover, roads near junction of LR Tai Tong Road Stop were blocked by protesters. In view of the situation and to ensure operational safety, LR service had to be suspended at around 3:40pm. Separately, ticket-issuing machines, Octopus fare processors and Passenger Information Display Panels at a number of LR stops, including LR Tin Yat, Tsing Shan Tsuen and Siu Lun stops, were vandalised. Station facilities at the stops were also defaced with spray paint.

As for Heavy Rail, various objects were thrown onto the tracks of Platform 4 (Hung Hom-bound) at Sha Tin Station on the East Rail Line at around 2:40pm, threatening the safe operation of trains. Station staff subsequently removed the objects. Violent protesters also disrupted the operation of a number of stations, including Sha Tin Wai, City One, Tai Wo, Tai Wai and Mong Kok stations. Station facilities such as entry/exit gates and CCTV cameras were vandalised, while fire service facilities were activated without authorization. A petrol bomb was hurled into Entrance/Exit B2 of Wong Tai Sin Station. The Customer Service Centre at Kwai Hing Station was surrounded by protesters and staff had to be evacuated. Fire was set to a passenger subway in Mong Kok Station, and glasses of advertising panels in the subway were also damaged, leading to injury to a female pedestrian by broken glasses on the ground when she fell on the ground. The female pedestrian was sent to hospital for treatment.

Taking into account the vandalism in various stations and that operations were severely affected, the Corporation had to close a number of stations, including Sha Tin Wai, City One, Tsuen Wan, Kwai Hing, Kwai Fong, Prince Edward, Mong Kok, Yau Ma Tei, Kwun Tong, Tsuen Wan West and Tseung Kwan O stations with trains not stopping at these stations. The Corporation has been closely monitoring the public activities. To ensure the safety of passengers and staff, after risk assessment, train service on the Tsuen Wan Line, Tseung Kwan O Line, Ma On Shan Line and Kwun Tong Line were suspended early. All other stations and train services on MTR lines (excluding Airport Express) and MTR Bus ended at 10pm yesterday as planned.

In recent times, MTR maintenance staff have been inspecting the vandalised facilities, assessing the extent of damages and carrying out repair works during the non-traffic hours every day. We try our very best to maintain our service for the public. As for LR, since a large number of Octopus fare processors were damaged, LR service may be affected today. We will disseminate relevant information via the MTR website, MTR Mobile, station and in-train announcements as well as the media.

However, our efforts for repair works will be wasted and services will be further disrupted, impacting on the travelling public, if violence, vandalism or other malicious acts recur in the railway network. These unlawful acts generate risks and may result in emergency situations that seriously endanger the safety of passengers and staff. Under these circumstances, train service to and from the concerned stations may be stopped immediately. Stations may also be closed with little or no prior notice. Furthermore, the damaged stations and their facilities may not be able to resume service the next day or for even longer periods. In the event that such situations occur and cause inconvenience to passengers, the Corporation appeals for passengers' understanding. Passengers are advised to pay attention to the latest service information in advance of their journeys.

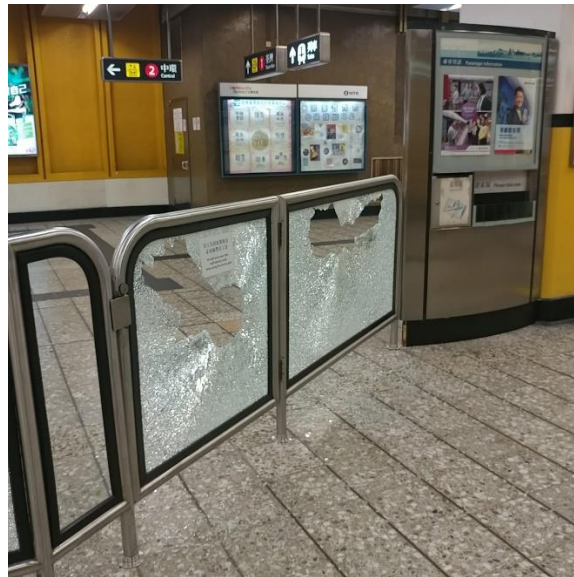
- End -

Photo captions:

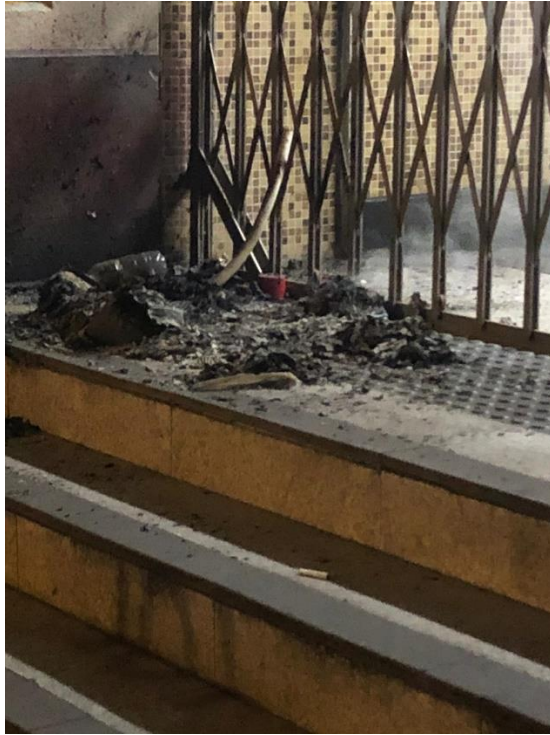
Tsuen Wan Line – Mong Kok Station



Tsuen Wan Line – Kwai Hing Station



Kwun Tong Line – Wong Tai Sin Station



Kwun Tong Line – Kwun Tong Station



East Rail Line – Sha Tin Station



East Rail Line – Tai Wo Station



Ma On Shan Line – Sha Tin Wai Station



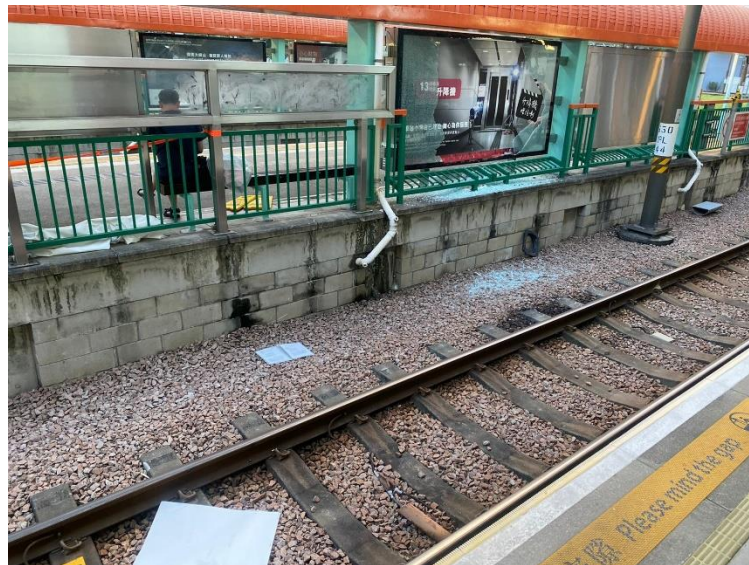
Light Rail Hoh Fuk Tong Stop



Light Rail Tsing Shan Tsuen Stop



Light Rail Tin Yat Stop



Light Rail Siu Lun Stop

