

PRESS STATEMENT

10 November 2019

MTR Strongly Condemns Attacks Targeting MTR Stations and Buses

The MTR Corporation strongly condemns rioters for maliciously damaging facilities of operating stations and MTR buses with passengers on board today (10 November 2019). The Corporation has reported the cases of vandalism to the police and reserves the right to take legal action against the parties concerned.

A group of rioters entered Sha Tin Station at around 2:45pm and damaged facilities including entry/exit gates, ticket issuing machines and Customer Service Centre. Sha Tin Station had to be immediately closed to protect the safety of passengers and MTR staff, with East Rail Line trains not stopping at the station. In response to unexpected situations near Ma On Shan Station, the station had to be closed at around 5:30pm following a detailed risk assessment, with Ma On Shan Line trains not stopping at the station. Furthermore, facilities including entry/exit gates and Octopus add value machines at Mong Kok East Station were also damaged at around 5:50pm. At around 7:20pm, rioters entered Tai Wo Hau Station and damaged display panels and Octopus readers of all of the 19 entry/exit gates at the station as well as some of the ticket issuing machines and Octopus add value machines. Station staff had to open manual service gates for other passengers to maintain the operations of the station.

At around 5pm, rioters defaced the windshield and rear-view mirrors of a Route K76 MTR Bus, which runs in the Tin Shui Wai area, at Tin Heng Bus Terminus when passengers were boarding the bus. The bus captain immediately evacuated the passengers. The rioters then damaged the rear-view mirrors of a Route K73 MTR Bus which was also at the terminus. Services of routes K73 and K76 were therefore immediately suspended to protect the safety of passengers and MTR staff.

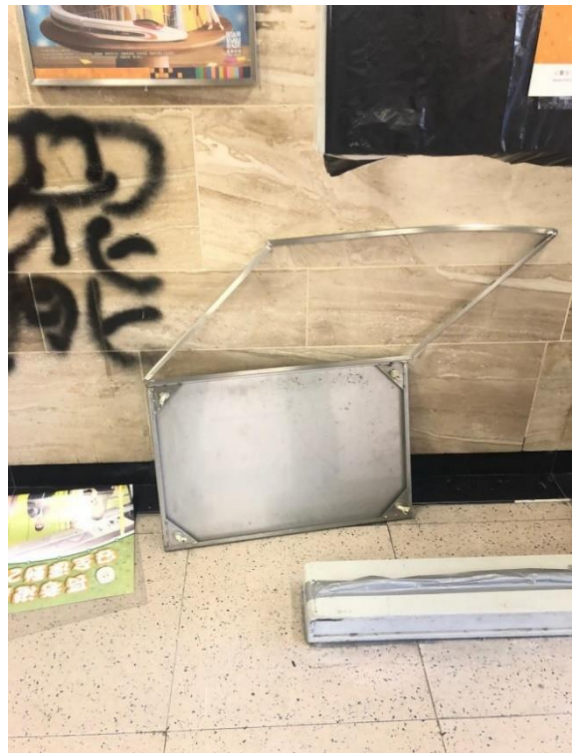
In addition, as roads in Tin Shui Wai were blocked by protesters after 3pm, the services of a number of Light Rail routes had to be adjusted, including the service suspension of Routes 706 and 761P as well as the diversion of Route 751 to run between Yau Oi and Hung Shui Kiu stops with a headway of 18 to 25 minutes.

The MTR Corporation reiterates that any violence, vandalism or other malicious acts in the railway network will disrupt services impacting on the travelling public, and will also generate risks which may result in emergency situations that seriously endanger the safety of passengers, MTR staff and railway facilities. The Corporation strongly condemns these unlawful acts and has reported the cases to the police. The Corporation will continue to assess the risks with relevant government departments and may shorten service hours in response to increased risk or disruption of railway facilities. If our services are affected, relevant information will be disseminated via the MTR website, MTR Mobile, station and in-train announcements as well as the media.

- End -

Photo Captions:

1. Facilities including entry/exit gates, the Customer Service Centre and advertising panels were maliciously damaged at Sha Tin Station.



2. The rear-view mirrors of a Route K73 MTR Bus were vandalised.



3. The windshield and rear-view mirrors of a Route K76 MTR Bus were defaced by protesters while passengers were boarding the bus.

