



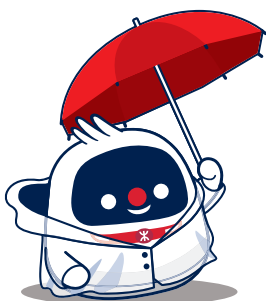
MTR Services under Tropical Cyclone Warning Signals



Rail and MTR Bus Services under Tropical Cyclone Warning Signals

As safety is the prerequisite of all MTR operations, Rail and MTR Bus services may be affected by Tropical Cyclones approaching or already impacting Hong Kong.

This leaflet gives an overview of how MTR services will be adjusted under each Tropical Cyclone Warning Signal and how this could have an impact on your travel.



Standby Signal 1 & Strong Wind Signal 3

When the Standby Signal 1 or Strong Wind Signal 3 is issued during normal traffic hours, Rail and MTR Bus services will remain normal.

With these signals in place, MTR staff will make preparations in stations and along open sections of the railway in case higher signals are issued.

Advance Notice of Gale or Storm Signal 8

When the Hong Kong Observatory announces that the Gale or Storm Signal 8 will be issued later, Rail and MTR Bus services will initially remain normal, with service frequencies being increased if necessary to meet passenger demand.

Additional staff will be deployed to monitor the overhead lines and track conditions. They will also prepare and check all emergency equipment.

8



Gale or Storm Signal 8

Rail and MTR Bus services will initially remain normal with MTR deploying additional staff to operate Rail and MTR Bus services at increased frequencies if passenger demand requires. However, the service frequencies will be reduced later as the storm gets closer. MTR Bus service will be suspended 3 hours after the issuing of Signal 8.

Additional staff will be deployed to check the overhead lines and track conditions and carry out any urgent repair work when it is safe to do so.

9

10



Increasing Gale or Storm Signal 9 & Hurricane Signal 10

There will be no service on open sections of the railway.

Whilst every effort will be made to maintain a limited service on the underground sections of the railway, the frequencies will be limited and travel time may be longer due to safety considerations. Rail service may stop at any time without notice.

Additional staff will be deployed to check the overhead lines and track conditions and carry out any urgent repair work when it is safe to do so.





You are advised to remain where you are if protected. Stations will remain open wherever possible to provide shelter for passengers for whom onward travel is disrupted.

MTR services under Increasing Gale or Storm Signal 9 and Hurricane Signal 10







Under the Increasing Gale or Storm Signal 9 or Hurricane Signal 10, MTR service arrangements will be as follows:

Service suspended

	Airport Express	All stations
	Disneyland Resort Line	All stations
	Light Rail	All stops
	MTR Bus	All routes

Limited service on the underground sections of these Lines*

(Service may stop at any time and without notice)

	East Rail Line	Hung Hom ↔ Admiralty
	Island Line	Heng Fa Chuen ↔ Kennedy Town
	Kwun Tong Line	Choi Hung ↔ Whampoa
	South Island Line	South Horizons ↔ Lei Tung
	Tseung Kwan O Line	All stations
	Tsuen Wan Line	Lai King ↔ Central
	Tuen Ma Line	Tsuen Wan West ↔ East Tsim Sha Tsui Ho Man Tin ↔ Diamond Hill
	Tung Chung Line	Kowloon ↔ Hong Kong

* There is no service on open sections of the railway

Lowering of Signals and Resumption of Service

Replacement of Hurricane Signal 10 or Increasing Gale or Storm Signal 9 with Gale or Storm Signal 8

As soon as the Hong Kong Observatory announces that higher signals will be replaced by the Gale or Storm Signal 8, MTR staff will be busy preparing for the full resumption of Rail service.

However normal service on open sections of the railway may not resume immediately upon the issuing of the Gale or Storm Signal 8 as MTR staff may have to clear debris from the tracks, repair any damaged equipment such as overhead lines, and get all trains to the required operating locations. Rail service will gradually be provided along open sections of the railway as long as it is safe to do so, but overall Rail service may initially operate to a limited frequency. The MTR Bus service will remain suspended.

Your patience and understanding is appreciated.

Replacement of Gale or Storm Signal 8 with Strong Wind Signal 3

When the Hong Kong Observatory announces that higher signals will be replaced by the Strong Wind Signal 3, MTR will deploy additional staff to prepare for MTR Bus service resumption and to operate normal Rail service at increased frequencies if passenger demand requires.

Your patience and understanding is appreciated.

Notes

Allow extra travelling time!

Passengers are advised to allow additional travel time when Tropical Cyclone Warning Signals are in place as Crowd Management Measures may be implemented in some stations.

When the Gale or Storm Signal 8 is issued as the storm gets closer, you are advised to return home as soon as possible.

Start and close of service / Non-traffic hours

Should Tropical Cyclone Warning Signal 8, 9 or 10 be issued or replaced in early morning or late evening when there is a lower passenger demand, MTR will provide a limited service based on the service commitment for the specific Tropical Cyclone Warning Signal issued.

If Tropical Cyclone Warning Signal 8, 9 or 10 is issued or replaced during non-service hours, updated information on Rail and MTR Bus services will be provided on the MTR website and MTR Mobile before the start of service.

Interruption to service

MTR will always try to provide the service promised, however safety must always be the prerequisite as the weather situation may change suddenly and conditions in different locations will vary considerably especially in exposed and remote areas.

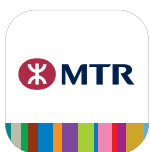
Service on open sections of the railway and the MTR Bus service will be suspended immediately and without notice if the weather conditions suddenly deteriorate.

Updated information

Updated information will be provided in stations and through the MTR website, MTR Mobile, radio and TV broadcasts.



MTR website
www.mtr.com.hk



MTR Mobile Traffic News
